



Reef Check
HAWAII

Annual Report 2024





Published by Reef Check Foundation
Hawai'i Program

Copyright © 2025, Reef Check Foundation

This publication may be reproduced for educational or non-profit purposes without special permission from the copyright holders, provided acknowledgement of the source is made. Reef Check Foundation would appreciate receiving a copy of any publications that use this document as a source.

This report shall be cited as:

Reef Check Foundation. 2025. *Reef Check Hawai'i Annual Report, 2024.*

For further information, please contact

Brad Giles
Program Coordinator
Reef Check - Hawai'i
PO Box 241
Kailua Kona, HI 96745

Email: hawaii@reefcheck.org
Website: www.reefcheck.org/hawaii

Follow Us on Social Media

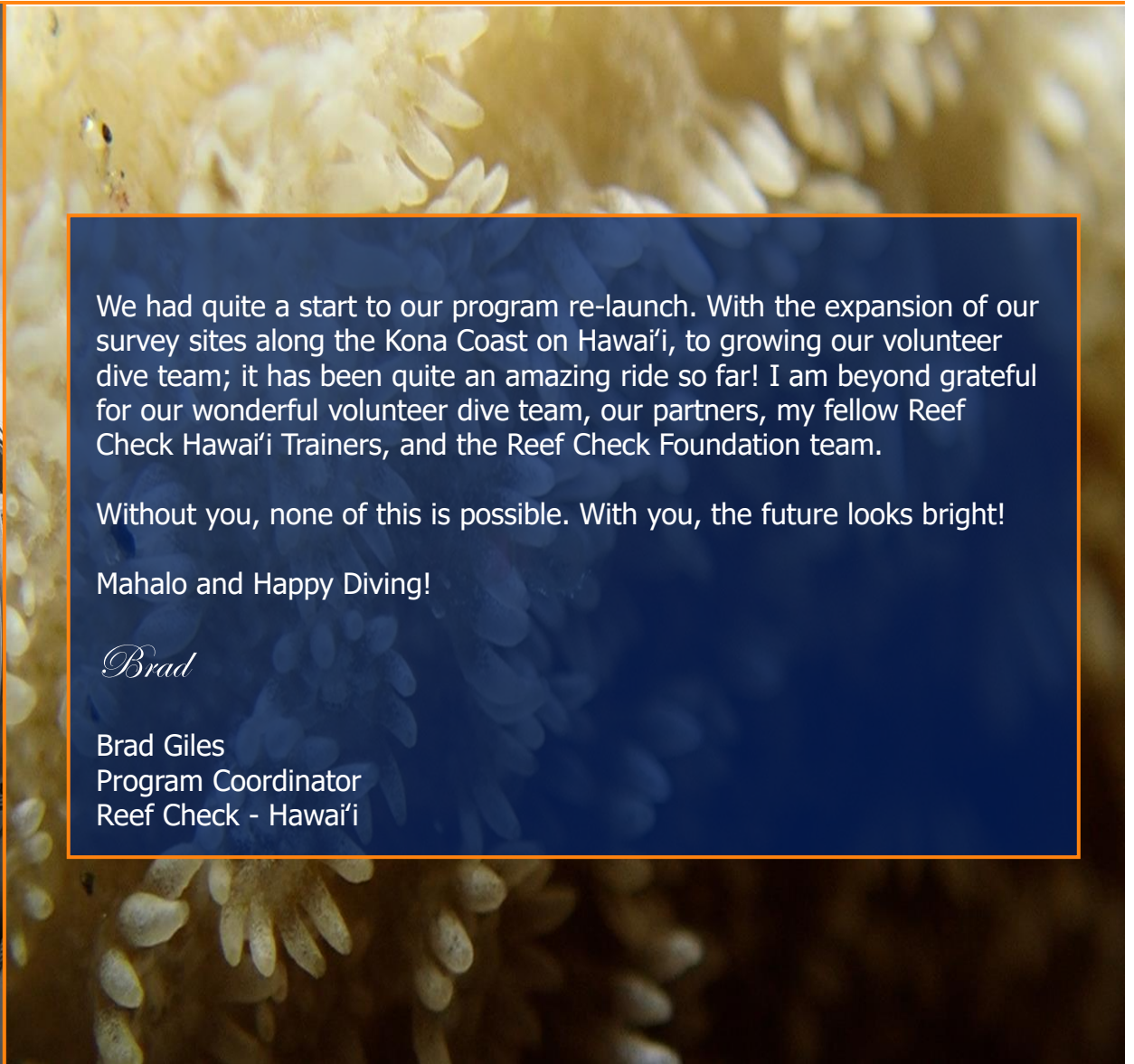
Instagram: @ReefCheck_Hawaii
Facebook: Reef Check Hawaii

Contents



A Message From Our Coordinator	4
Reef Check Hawai'i 2024 Program Highlights	5
Executive Summary	6
1. Background	7
2. Methodology	9
3. Survey Results Hawai'i	16
Survey Overview 2024	17
Percentage Substrate Coverage 2024	18
Fish Abundance 2024	19
Invertebrate Abundance 2024	20
Megafauna / Rare Species 2024	21
Sub Region: Honokōhau	22
Sub Region: Kaloko	40
Sub Region: Pine Trees	54
Sub Region: Makako Bay	70
Sub Region: Hōnaunau	84
4. Team	98
5. Acknowledgements	100

A Message from Our Program Coordinator



We had quite a start to our program re-launch. With the expansion of our survey sites along the Kona Coast on Hawai'i, to growing our volunteer dive team; it has been quite an amazing ride so far! I am beyond grateful for our wonderful volunteer dive team, our partners, my fellow Reef Check Hawai'i Trainers, and the Reef Check Foundation team.

Without you, none of this is possible. With you, the future looks bright!

Mahalo and Happy Diving!

Brad

Brad Giles
Program Coordinator
Reef Check - Hawai'i

Reef Check Hawai'i 2024 Program Highlights



December 2024



Reef Check Hawai'i Team completes 11 surveys on Hawai'i.

October 2024



Two EcoDiver courses and one EcoDiver Trainer course completed.

September 2024



Reef Check Foundation rekindles Long-Term Monitoring Program in Hawai'i.

Executive Summary



This report presents data from coral reef surveys conducted in Hawai'i during 2024 using the Reef Check survey protocol. Reef Check is a coral reef monitoring methodology used to assess the health of coral reefs in 102 countries and territories worldwide. Surveys were carried out by trained volunteers.

A total of 11 sites were surveyed in 2024, all on the island of Hawai'i.

The results indicate that, on average, the coral reefs surveyed had 29% live coral coverage. Yellow Tang were the most abundant indicator fish species observed with 8.40 per 500 m³, while Red Pencil Urchins were the most abundant invertebrate indicator species observed with 30.57 per 100 m².

Two Reef Check EcoDiver courses were conducted with seven EcoDiver Certifications issued.

One Reef Check EcoDiver Trainer course was conducted, producing three new EcoDiver Trainers.

1. Background

Background



Reef Check Hawai'i is part of the world-wide Reef Check network. Established in 1997 in the USA, Reef Check has conducted over 16,000 surveys in 102 countries and territories. Reef Check was established by a group of scientists who developed a simple, rapid method of surveying coral reefs. Reef Check is both the name of the organization and the survey methodology.

Reef Check takes on the conservation challenge of long-term monitoring of coral reefs and kelp forests globally.

The first ever survey utilizing the Reef Check protocol was conducted on the island of Kauai, here in Hawai'i. From 1996 to 2023, 114 surveys had been conducted across the islands of Hawai'i, Maui, Oahu, and Kauai. The Hawai'i program was revitalized in September 2024. The information shown highlights information about coral reef health in Hawai'i.

2. Methodology

Methodology Overview



Reef Check surveys are based on the philosophy of “Indicator Species.” These are marine organisms that:

- Are widely distributed on coral reefs, globally,
- Are easy for non-scientists to identify, and
- Provide information about the health of a coral reef.

Using a standardized methodology, data from surveys in different areas can be compared, whether it be on an island, regional national, or international basis (see www.reefcheck.org for more information).

The Reef Check monitoring methodology allows scientists, researchers, and managers to track changes to coral reefs over time. By surveying reefs on a regular basis, harmful or damaging changes can be highlighted early, before they become problems. This gives managers the opportunity to intervene, carry out additional more detailed studies and/or initiate management actions to try to reverse the change before permanent damage is done to the reef.

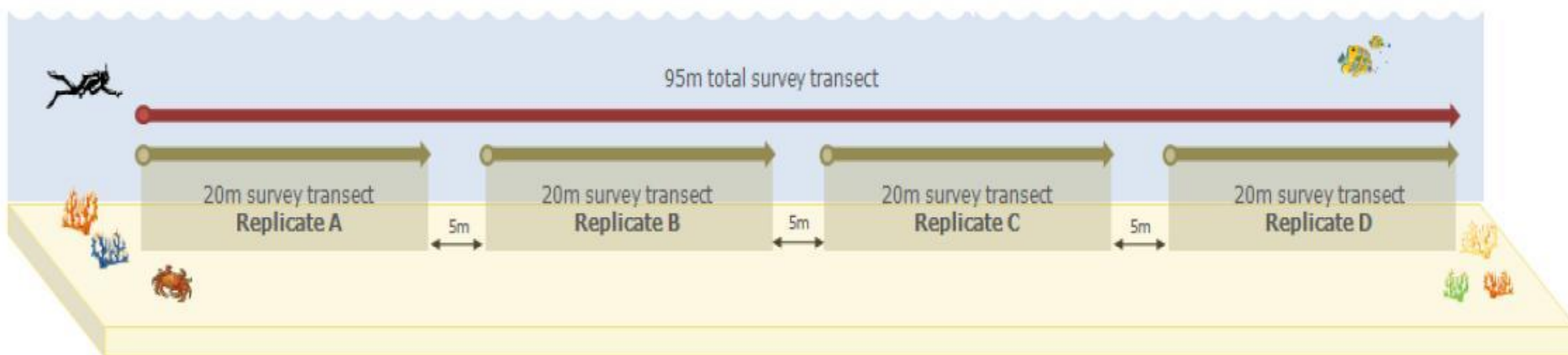
Methodology Overview



A 100 meter transect line is deployed and along it, four 20 meter transects are surveyed. Each separated by 5 meters, providing 4 replicates per transect for statistical analysis (see figure below).

Four types of data are collected:

1. Fish
2. Invertebrate
3. Substrate
4. Impact



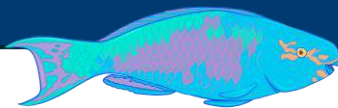
Divers count the indicator fish along the four 20m long x 5m wide x 5m high corridors.

Megafauna and rare animals including Hawaiian Monk Seals, Manta Rays, Sharks, and Dolphins are also counted.

Reef Check indicator fish species were chosen on the basis of targeted demand for:

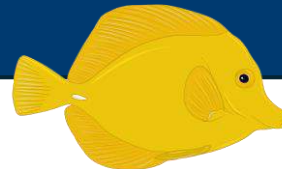
Food

- Parrotfish
- Jacks
- Snapper
- Moray Eel
- Yellowfin Goatfish



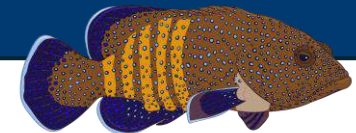
Aquarium

- Butterflyfish
- Orangespine Unicornfish
- Yellow Tang



Invasive Species

- Bluestripe Snapper
- Peacock Grouper



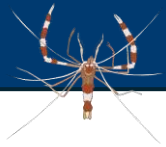
Invertebrates Survey

Divers count the indicator invertebrates along the four 20m long x 5m wide belts.

Reef Check indicator invertebrate species were chosen on the basis for:

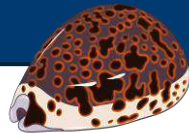
Aquarium

- Banded Coral Shrimp



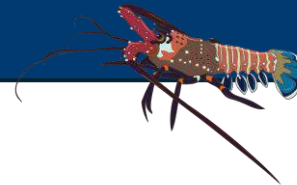
Curio

- Cowries
- Pencil Urchin
- Triton



Food

- Collector Urchin
- Lobster



Ecological Imbalance / Predator Outbreaks

- Longspined Black Sea Urchin
- Crown of Thorns Sea Star

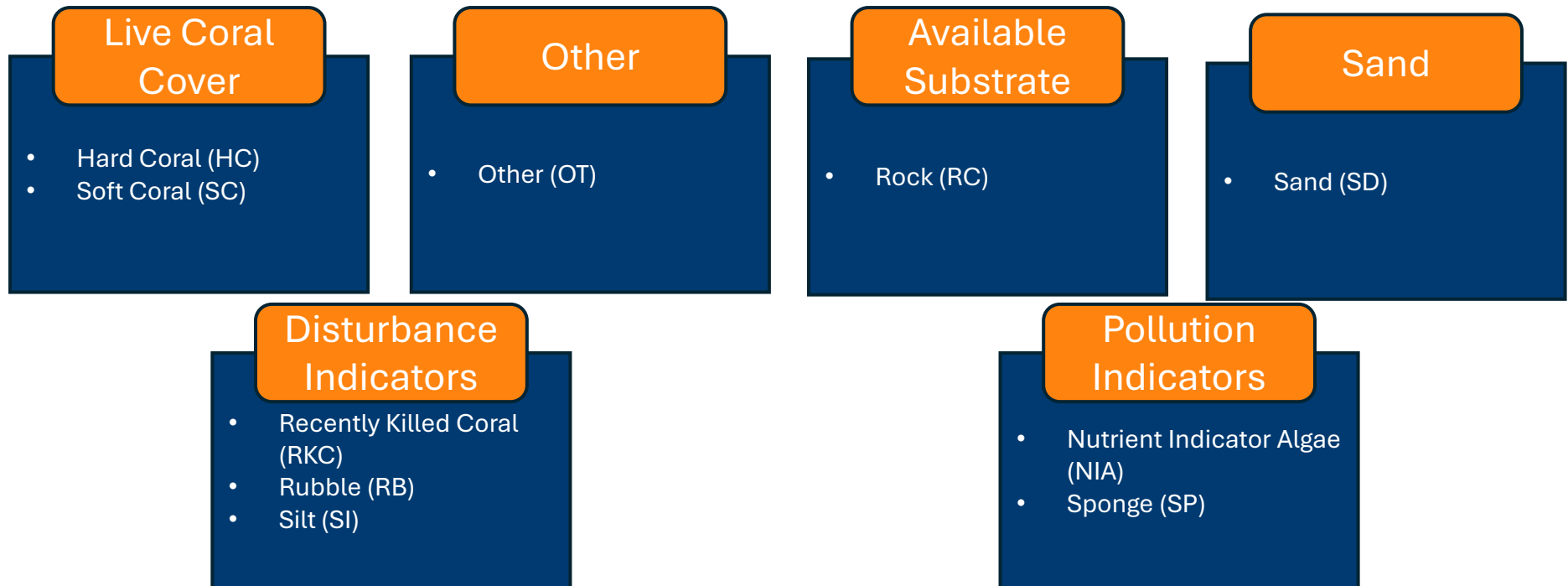


Substrate Survey



Using Point Intercept method, substrate is noted at every 0.5m along the four 20m lines.

The substrate types are divided into categories that reflect reef health:

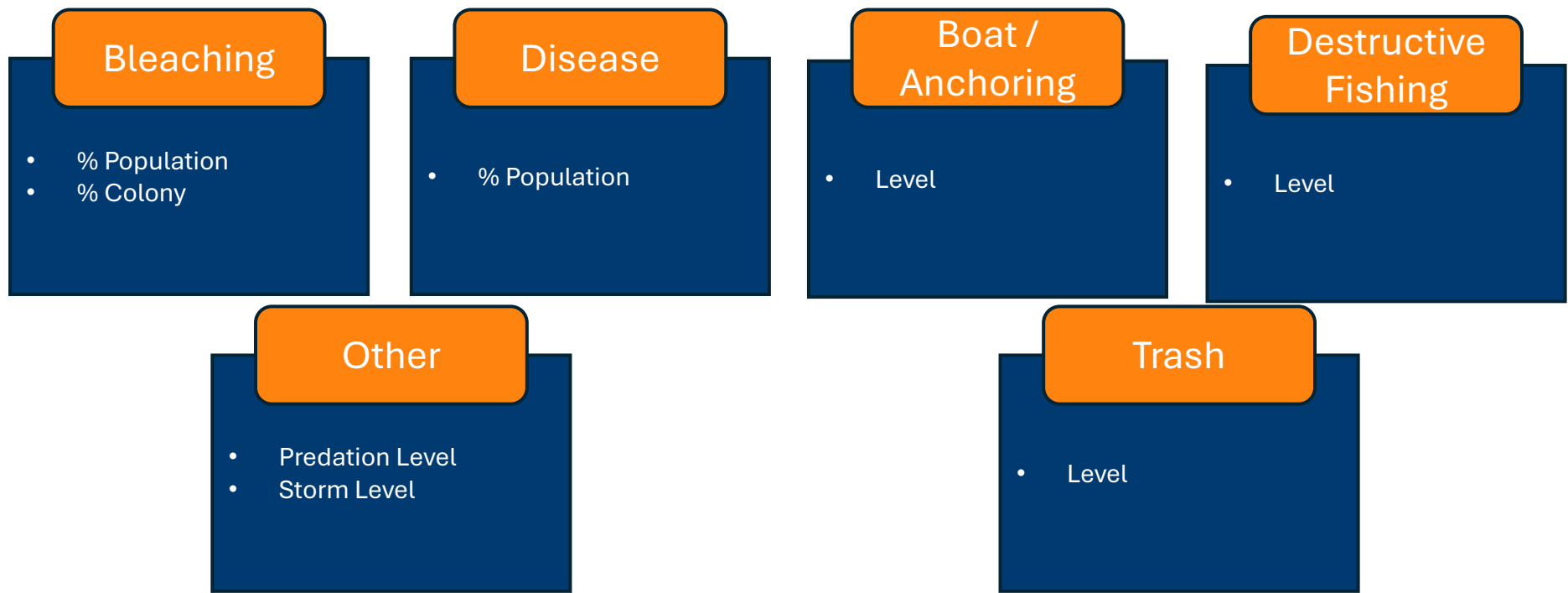


Impact Survey



Assess the damage to coral from bleaching, disease, boat/anchoring, destructive fishing, other (predation, storm) and trash along the four 20m long x 5m wide belts.

Impact levels are based on a 0-3 scale, from "0" no impacts observed to "3" high impact.



3. Survey Results

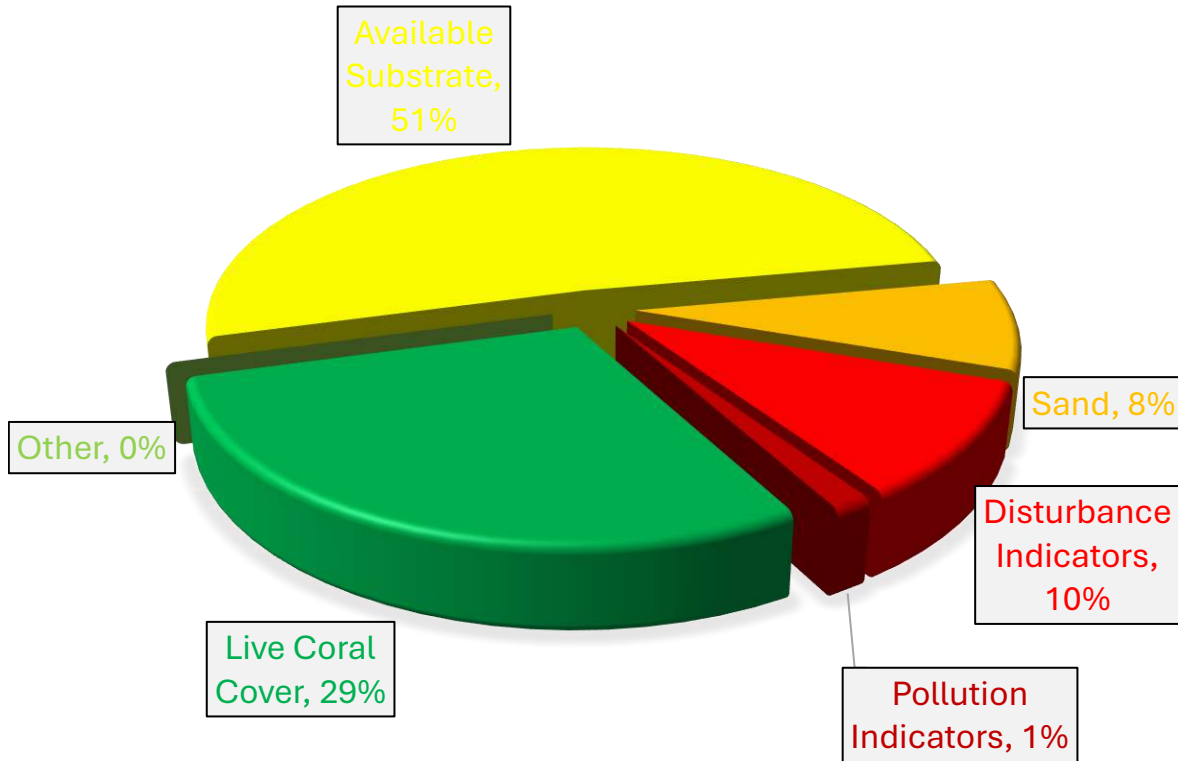
Survey Overview 2024



A total of 11 sites were surveyed in 2024, all on the island of Hawai'i. As far as possible, the same sites will be visited each year to provide consistent data over time, while new sites will be added in future years.



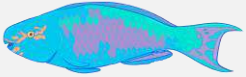




Percentage Substrate Coverage by Category 2024



Live Coral Cover	
Hard Coral	28.86%
Soft Coral	0.00%
Other	
Other	0.00%
Available Substrate	
Rock	51.48%
Sand	
Sand	8.18%
Disturbance Indicators	
Recently Killed Coral	1.14%
Rubble	8.98%
Silt	0.17%
Pollution Indicators	
Nutrient Indicator Algae	0.28%
Sponge	0.91%

Fish Abundance per 500m³



Food 4.85

Parrotfish	
0.80	
Snapper	
0.07	
Jacks	
0.14	
Moray Eel	
0.34	
Yellowfin Goatfish	
3.50	

Aquarium 12.35

Butterflyfish	
3.39	
Orangespine Unicornfish	
0.57	
Yellow Tang	
8.40	

Invasive Species 0.16

Peacock Grouper	
0.16	
Bluestriped Snapper	
0.00	

Invertebrate Abundance per 100m²

Food 17.07

Collector Urchin

17.05



Lobster

0.02



Aquarium 0.32

Banded Coral Shrimp

0.32



Curio 30.64

Cowries

0.07



Pencil Urchin

30.57



Triton

0.00



Ecological Imbalance / Predator Outbreaks 9.04

Long Spined Black Sea
Urchin

8.95







Crown of Thorns Sea
Star

0.09



Megafauna / Rare Species per 500m³

Rare Species	
Sharks	
0.00	
Turtles	
0.11	
Mantas	
0.00	
Other	
0.11	

Island: Hawai'i

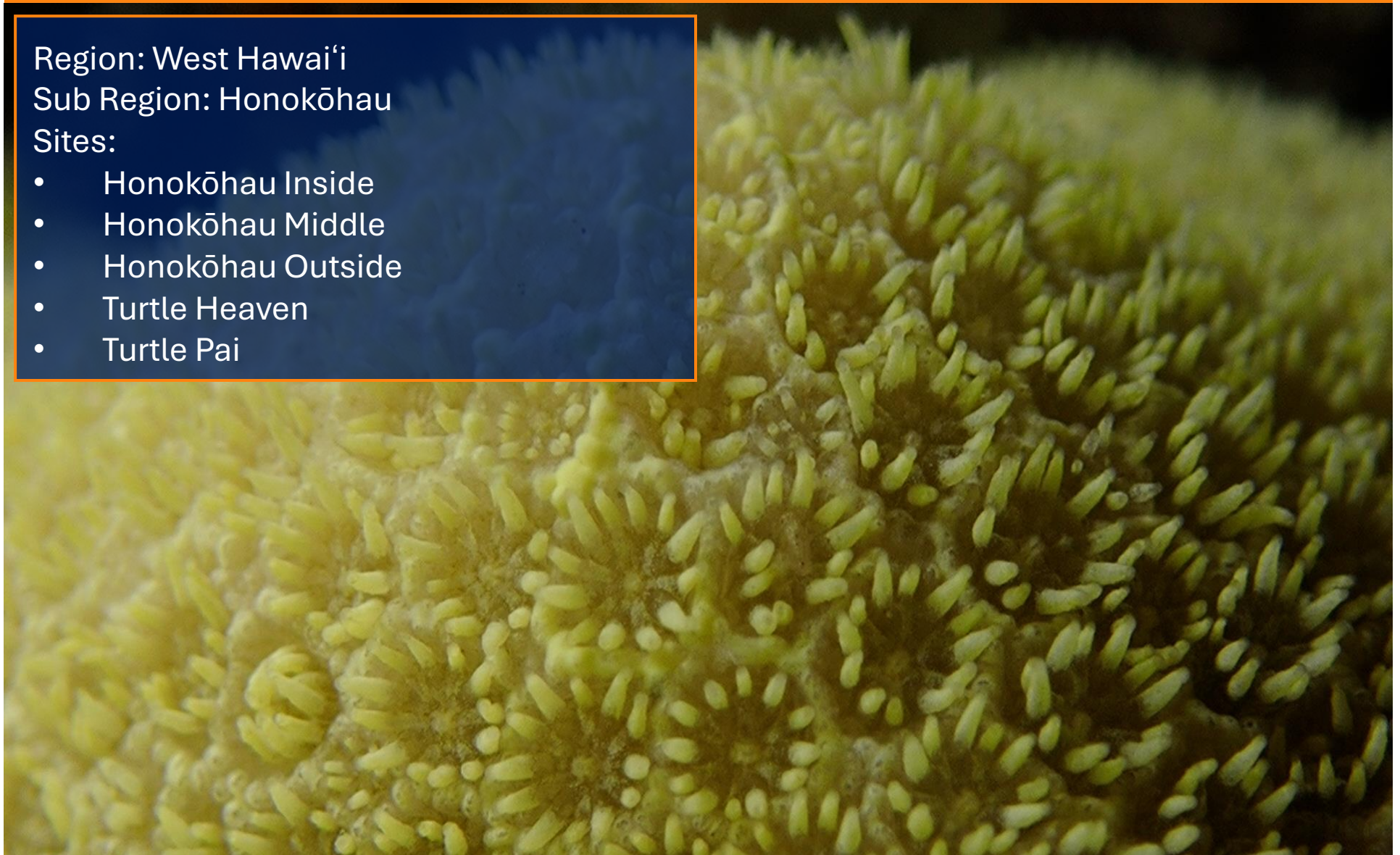


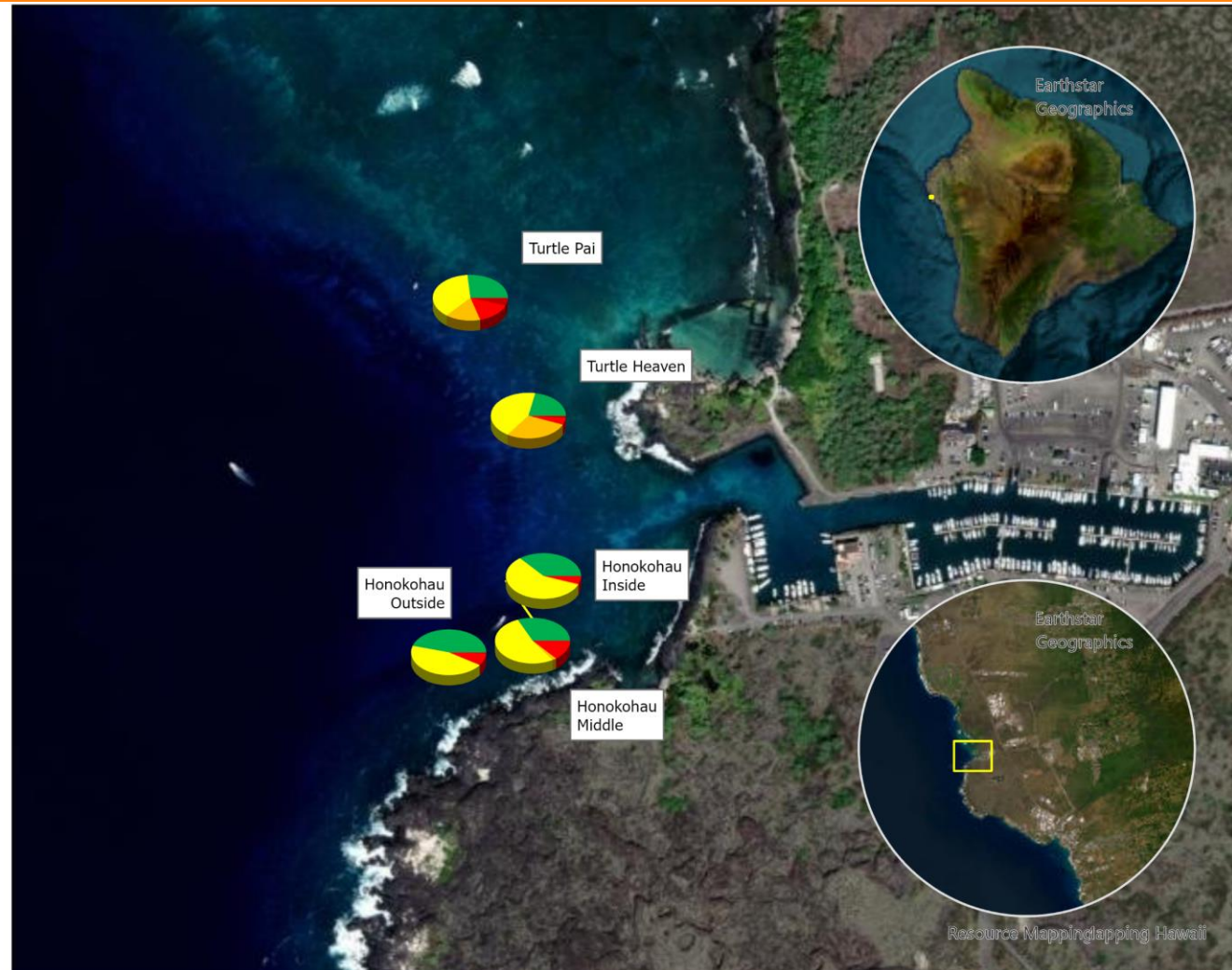
Region: West Hawai'i

Sub Region: Honokōhau

Sites:

- Honokōhau Inside
- Honokōhau Middle
- Honokōhau Outside
- Turtle Heaven
- Turtle Pai





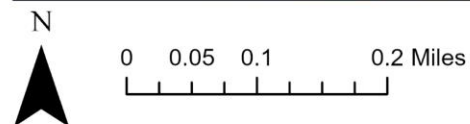
Legend

Substrate



-  Live Coral Cover
-  Other Cover
-  Available Substrate
-  Sand
-  Disturbance Indicators
-  Pollution Indicators

Reef Check substrate surveys are conducted using a Point Sampling method every 50 centimeters along 4 x 20 meter transects.





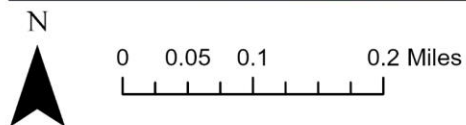
Legend

Hard Coral Coverage

Hard Coral (HC)

- Excellent 75.01 - 100.00%
- Good 50.01% - 75.00%
- Fair 25.01% - 50.00%
- Poor ≤ 25%

Reef Check substrate surveys are conducted using a Point Sampling method every 50 centimeters along 4 x 20 meter transects.



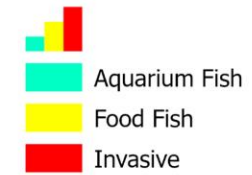
Honokōhau

Year: 2024

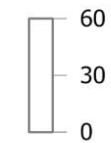


Legend

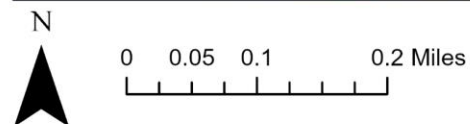
Fish



Selected fields



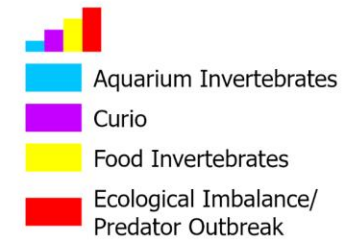
Reef Check fish surveys are conducted along 4 x 20 meter long x 5 meter wide x 5 meter high corridors.



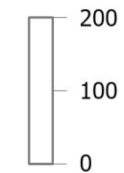


Legend

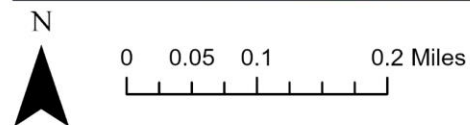
Invertebrates



Selected fields



Reef Check invertebrate surveys are conducted along 4 x 20 meter long x 5 meter wide belts.



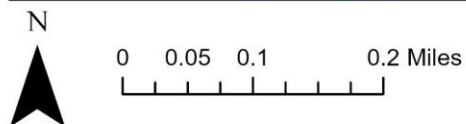


Legend

Bleaching (% of population)*

- 75.01 - 100.00%
- 50.00 - 75.00%
- 25.01 - 50.00%
- 0.01 - 25.00%
- No Bleaching Observed

Reef Check impact surveys are conducted along 4 x 20 meter long x 5 meter wide belts.





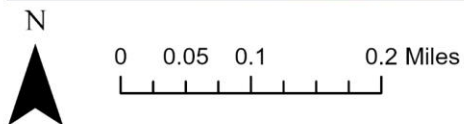
Legend

Black Band Disease

Black Band

- No Black Band Disease Observed

Reef Check impact surveys are conducted along 4 x 20 meter long x 5 meter wide belts.





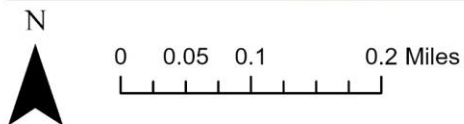
Legend

White Band
Disease

White Band

- No White Band Disease Observed

Reef Check impact surveys are conducted along 4 x 20 meter long x 5 meter wide belts.





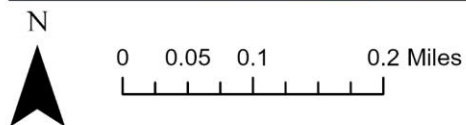
Legend

Coral Damage:
Boat/Anchor

Coral damage: boat/
anchor

- High 2.01 - 3.00
- Medium 1.01 - 2.00
- Low 0.01 - 1.00
- No Damage Observed

Reef Check impact surveys are conducted along 4 x 20 meter long x 5 meter wide belts.





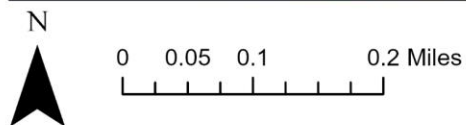
Legend

Coral Damage:
Dynamite

Coral damage:
dynamite

- No Damage Observed

Reef Check impact surveys are conducted along 4 x 20 meter long x 5 meter wide belts.





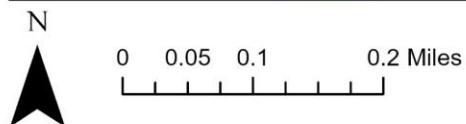
Legend

Coral Damage:
Other

Coral damage: other

- High 2.01 - 3.00
- Medium 1.01 - 2.00
- Low 0.01 - 1.00
- No Damage Observed

Reef Check impact surveys are conducted along 4 x 20 meter long x 5 meter wide belts.





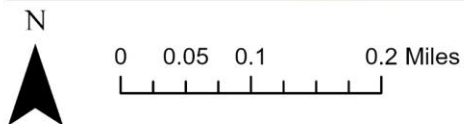
Legend

Trash: Fish Nets

Trash: fish nets

● No Trash Observed

Reef Check impact surveys are conducted along 4 x 20 meter long x 5 meter wide belts.





Legend

Trash: General

Trash: general

- High 2.01 - 3.00
- Medium 1.01 - 2.00
- Low 0.01 - 1.00
- No Trash Observed

Reef Check impact surveys are conducted along 4 x 20 meter long x 5 meter wide belts.

Island: Hawai'i



Region: West Hawai'i
 Sub Region: Honokōhau
 Sites:

- Honokōhau Inside
- Honokōhau Middle
- Honokōhau Outside
- Turtle Heaven
- Turtle Pai

Survey Date: 9/29/2024
 Latitude: 19.66793
 Longitude: -156.029
 Depth (m): 3

Substrate	
Live Coral Cover	38.12%
Hard Coral	38.12%
Soft Coral	0.00%
Other	0.00%
Other	0.00%
Available Substrate	56.87%
Rock	56.87%
Sand	0.63%
Sand	0.63%
Disturbance Indicators	4.38%
Recently Killed Coral	0.00%
Rubble	4.38%
Silt	0.00%
Pollution Indicators	0.00%
Nutrient Indicator Algae	0.00%
Sponge	0.00%

Fish per 500m ³	
Aquarium Fish	6.50
Butterfly Fish	2.75
Orangespine Unicornfish	0.00
Yellow Tang	3.75
Food Fish	38.25
Jacks	0.00
Yellowfin Goatfish	37.50
Parrotfish	0.50
Snapper	0.00
Moray Eel	0.25
Invasive	0.00
Blueline Snapper	0.00
Peacock Grouper	0.00

Invertebrates per 100m ²	
Aquarium Invertebrates	0.00
Banded Coral Shrimp	0.00
Curio	88.00
Cowries	0.00
Pencil Urchin	88.00
Triton	0.00
Food Invertebrates	53.50
Collector Urchin	53.50
Lobster	0.00
Ecological Imbalance / Predator Outbreak	43.50
Long Spined Black Sea Urchin	43.50
Crown of Thorns Sea Star	0.00

Impacts	
Coral Bleaching % Population	0.00%
Coral Bleaching % Colony	0.00%
Black Band Disease % Population	0.00%
White Band Disease % Population	0.00%
Coral Damage: Boat / Anchor	0.00
Coral Damage: Dyanmite	0.00
Coral Damage: Other	0.00
Trash: Fish Nets	0.25
Trash: General	0.00

Megafauna / Rare Species per 500m ³	
Sharks	0.00
Turtles	0.00
Manta Rays	0.00
Other Megafauna	0.00

Island: Hawai'i



Region: West Hawai'i
 Sub Region: Honokōhau
 Sites:

- Honokōhau Inside
- **Honokōhau Middle**
- Honokōhau Outside
- Turtle Heaven
- Turtle Pai

Survey Date: 9/25/2024
 Latitude: 19.66786
 Longitude: -156.0291
 Depth (m): 7

Substrate	
Live Coral Cover	33.12%
Hard Coral	33.12%
Soft Coral	0.00%
Other	0.00%
Other	0.00%
Available Substrate	52.50%
Rock	52.50%
Sand	1.88%
Sand	1.88%
Disturbance Indicators	11.87%
Recently Killed Coral	0.00%
Rubble	11.87%
Silt	0.00%
Pollution Indicators	0.63%
Nutrient Indicator Algae	0.00%
Sponge	0.63%

Fish per 500m ³	
Aquarium Fish	24.00
Butterfly Fish	3.75
Orangespine Unicornfish	0.25
Yellow Tang	20.00
Food Fish	3.25
Jacks	0.25
Yellowfin Goatfish	1.00
Parrotfish	1.25
Snapper	0.25
Moray Eel	0.50
Invasive	0.00
Blueline Snapper	0.00
Peacock Grouper	0.00

Invertebrates per 100m ²	
Aquarium Invertebrates	0.00
Banded Coral Shrimp	0.00
Curio	81.00
Cowries	0.25
Pencil Urchin	80.75
Triton	0.00
Food Invertebrates	19.75
Collector Urchin	19.75
Lobster	0.00
Ecological Imbalance / Predator Outbreak	1.75
Long Spined Black Sea Urchin	1.75
Crown of Thorns Sea Star	0.00

Impacts	
Coral Bleaching % Population	0.00%
Coral Bleaching % Colony	0.00%
Black Band Disease % Population	0.00%
White Band Disease % Population	0.00%
Coral Damage: Boat / Anchor	0.00
Coral Damage: Dyanmite	0.00
Coral Damage: Other	0.00
Trash: Fish Nets	0.50
Trash: General	0.00

Megafauna / Rare Species per 500m ³	
Sharks	0.00
Turtles	0.00
Manta Rays	0.00
Other Megafauna	0.00

Island: Hawai'i



Region: West Hawai'i
 Sub Region: Honokōhau
 Sites:

- Honokōhau Inside
- Honokōhau Middle
- **Honokōhau Outside**
- Turtle Heaven
- Turtle Pai

Survey Date: 9/29/2024
 Latitude: 19.66773
 Longitude: -156.0295
 Depth (m): 11

Substrate	
Live Coral Cover	46.87%
Hard Coral	46.87%
Soft Coral	0.00%
Other	0.00%
Other	0.00%
Available Substrate	46.25%
Rock	46.25%
Sand	0.00%
Sand	0.00%
Disturbance Indicators	6.88%
Recently Killed Coral	0.63%
Rubble	6.25%
Silt	0.00%
Pollution Indicators	0.00%
Nutrient Indicator Algae	0.00%
Sponge	0.00%

Fish per 500m ³	
Aquarium Fish	39.25
Butterfly Fish	5.75
Orangespine Unicornfish	0.25
Yellow Tang	33.25
Food Fish	2.00
Jacks	0.00
Yellowfin Goatfish	0.00
Parrotfish	1.75
Snapper	0.00
Moray Eel	0.25
Invasive	0.25
Blueline Snapper	0.00
Peacock Grouper	0.25

Invertebrates per 100m ²	
Aquarium Invertebrates	0.50
Banded Coral Shrimp	0.50
Curio	40.25
Cowries	0.25
Pencil Urchin	40.00
Triton	0.00
Food Invertebrates	5.50
Collector Urchin	5.50
Lobster	0.00
Ecological Imbalance / Predator Outbreak	1.75
Long Spined Black Sea Urchin	1.75
Crown of Thorns Sea Star	0.00

Impacts	
Coral Bleaching % Population	0.00%
Coral Bleaching % Colony	0.00%
Black Band Disease % Population	0.00%
White Band Disease % Population	0.00%
Coral Damage: Boat / Anchor	0.00
Coral Damage: Dyanmite	0.00
Coral Damage: Other	0.00
Trash: Fish Nets	0.25
Trash: General	0.00

Megafauna / Rare Species per 500m ³	
Sharks	0.00
Turtles	0.00
Manta Rays	0.00
Other Megafauna	0.00

Island: Hawai'i



Region: West Hawai'i
 Sub Region: Honokōhau
 Sites:

- Honokōhau Inside
- Honokōhau Middle
- Honokōhau Outside
- Turtle Heaven
- Turtle Pai

Survey Date: 9/30/2024
 Latitude: 19.67038
 Longitude: -156.0292
 Depth (m): 11

Substrate	
Live Coral Cover	21.25%
Hard Coral	21.25%
Soft Coral	0.00%
Other	0.00%
Other	0.00%
Available Substrate	42.50%
Rock	42.50%
Sand	31.88%
Sand	31.88%
Disturbance Indicators	3.75%
Recently Killed Coral	0.62%
Rubble	3.13%
Silt	0.00%
Pollution Indicators	0.62%
Nutrient Indicator Algae	0.62%
Sponge	0.00%

Fish per 500m ³	
Aquarium Fish	12.25
Butterfly Fish	2.75
Orangespine Unicornfish	1.00
Yellow Tang	8.50
Food Fish	2.00
Jacks	0.00
Yellowfin Goatfish	0.00
Parrotfish	1.00
Snapper	0.25
Moray Eel	0.75
Invasive	0.25
Blueline Snapper	0.00
Peacock Grouper	0.25

Invertebrates per 100m ²	
Aquarium Invertebrates	0.75
Banded Coral Shrimp	0.75
Curio	6.50
Cowries	0.00
Pencil Urchin	6.50
Triton	0.00
Food Invertebrates	33.00
Collector Urchin	33.00
Lobster	0.00
Ecological Imbalance / Predator Outbreak	1.25
Long Spined Black Sea Urchin	1.25
Crown of Thorns Sea Star	0.00

Impacts	
Coral Bleaching % Population	0.00%
Coral Bleaching % Colony	0.00%
Black Band Disease % Population	0.00%
White Band Disease % Population	0.00%
Coral Damage: Boat / Anchor	0.00
Coral Damage: Dyanmite	0.00
Coral Damage: Other	0.00
Trash: Fish Nets	0.75
Trash: General	0.00

Megafauna / Rare Species per 500m ³	
Sharks	0.00
Turtles	1.00
Manta Rays	0.00
Other Megafauna	1.00

Island: Hawai'i



Region: West Hawai'i
 Sub Region: Honokōhau
 Sites:

- Honokōhau Inside
- Honokōhau Middle
- Honokōhau Outside
- Turtle Heaven
- **Turtle Pai**

Survey Date: 10/2/2024

Latitude: 19.6717

Longitude: -156.0299

Depth (m): 10

Substrate	
Live Coral Cover	27.50%
Hard Coral	27.50%
Soft Coral	0.00%
Other	0.00%
Other	0.00%
Available Substrate	36.25%
Rock	36.25%
Sand	19.37%
Sand	19.37%
Disturbance Indicators	15.63%
Recently Killed Coral	3.13%
Rubble	12.50%
Silt	0.00%
Pollution Indicators	1.25%
Nutrient Indicator Algae	1.25%
Sponge	0.00%

Fish per 500m ³	
Aquarium Fish	3.25
Butterfly Fish	2.00
Orangespine Unicornfish	0.25
Yellow Tang	1.00
Food Fish	2.25
Jacks	0.00
Yellowfin Goatfish	0.00
Parrotfish	1.75
Snapper	0.00
Moray Eel	0.50
Invasive	0.25
Blueline Snapper	0.00
Peacock Grouper	0.25

Invertebrates per 100m ²	
Aquarium Invertebrates	1.25
Banded Coral Shrimp	1.25
Curio	7.25
Cowries	0.25
Pencil Urchin	7.00
Triton	0.00
Food Invertebrates	29.00
Collector Urchin	29.00
Lobster	0.00
Ecological Imbalance / Predator Outbreak	2.00
Long Spined Black Sea Urchin	1.75
Crown of Thorns Sea Star	0.25

Impacts	
Coral Bleaching % Population	0.00%
Coral Bleaching % Colony	0.00%
Black Band Disease % Population	0.00%
White Band Disease % Population	0.00%
Coral Damage: Boat / Anchor	0.00
Coral Damage: Dyanmite	0.00
Coral Damage: Other	0.00
Trash: Fish Nets	0.50
Trash: General	0.00

Megafauna / Rare Species per 500m ³	
Sharks	0.00
Turtles	0.00
Manta Rays	0.00
Other Megafauna	0.00

Island: Hawai'i



Region: West Hawai'i

Sub Region: Kaloko

Sites:

- Lone Tree





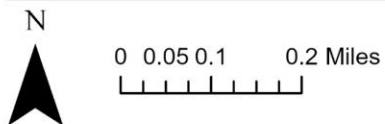
Legend

Substrate



- Live Coral Cover
- Other Cover
- Available Substrate
- Sand
- Disturbance Indicators
- Pollution Indicators

Reef Check substrate surveys are conducted using a Point Sampling method every 50 centimeters along 4 x 20 meter transects.



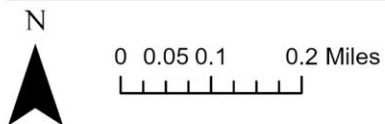


Legend

Hard Coral (HC)

- Excellent 75.01% - 100.00%
- Good 50.01% - 75.00%
- Fair 25.01% - 50.00%
- Poor $\leq 25\%$

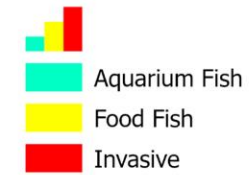
Reef Check substrate surveys are conducted using a Point Sampling method every 50 centimeters along 4 x 20 meter transects.



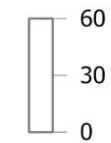


Legend

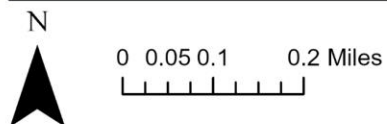
Fish



Selected fields

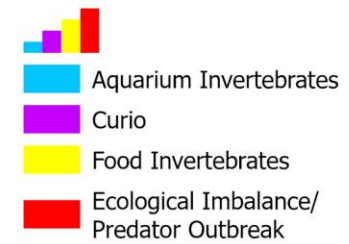


Reef Check fish surveys are conducted along 4 x 20 meter long x 5 meter wide x 5 meter high corridors.

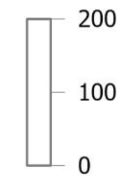




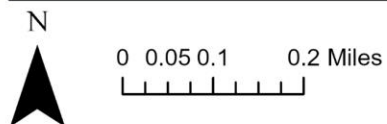
Legend



Selected fields



Reef Check invertebrate surveys are conducted along 4 x 20 meter long x 5 meter wide belts.



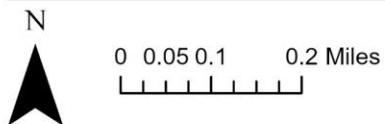


Legend

Bleaching (% of population)*

- 75.01 - 100.00%
- 50.00 - 75.00%
- 25.01 - 50.00%
- 0.01 - 25.00%
- No Bleaching Observed

Reef Check impact surveys are conducted along 4 x 20 meter long x 5 meter wide belts.



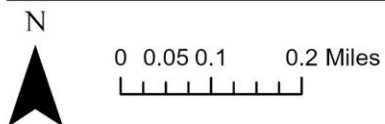


Legend

Black Band

- No Black Band Disease Observed

Reef Check impact surveys are conducted along 4 x 20 meter long x 5 meter wide belts.





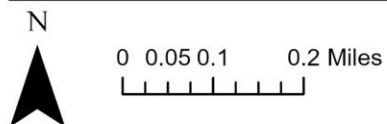
Legend

White Band
Disease

White Band

- No White Band Disease
- Observed

Reef Check impact surveys are conducted along 4 x 20 meter long x 5 meter wide belts.





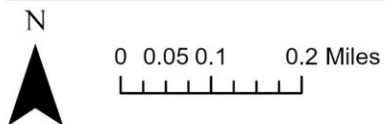
Legend

Coral Damage:
Boat/Anchor

Coral damage: boat/
anchor

- High 2.01 - 3.00
- Medium 1.01 - 2.00
- Low 0.01 - 1.00
- No Damage Observed

Reef Check impact surveys are conducted along 4 x 20 meter long x 5 meter wide belts.





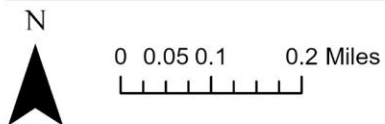
Legend

Coral Damage:
Dynamite

Coral damage:
dynamite

● No Damage Observed

Reef Check impact surveys are conducted along 4 x 20 meter long x 5 meter wide belts.





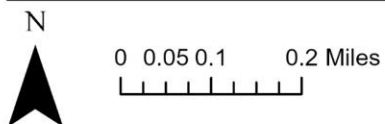
Legend

Coral Damage:
Other

Coral damage: other

- High 2.01 - 3.00
- Medium 1.01 - 2.00
- Low 0.01 - 1.00
- No Damage Observed

Reef Check impact surveys are conducted along 4 x 20 meter long x 5 meter wide belts.





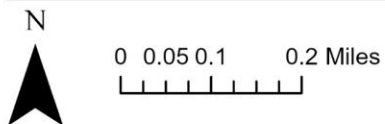
Legend

Trash: Fish Nets

Trash: fish nets

● No Trash Observed

Reef Check impact surveys are conducted along 4 x 20 meter long x 5 meter wide belts.





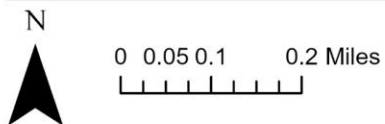
Legend

Trash: General

Trash: general

- High 2.01 - 3.00
- Medium 1.01 - 2.00
- Low 0.01 - 1.00
- No Trash Observed

Reef Check impact surveys are conducted along 4 x 20 meter long x 5 meter wide belts.



Island: Hawai'i



Region: West Hawai'i

Sub Region: Kaloko

Sites:

- Lone Tree

Survey Date: 9/27/2024

Latitude: 19.69113

Longitude: -156.0408

Depth (m): 10

Substrate	
Live Coral Cover	11.88%
Hard Coral	11.88%
Soft Coral	0.00%
Other	0.00%
Other	0.00%
Available Substrate	59.37%
Rock	59.37%
Sand	6.25%
Sand	6.25%
Disturbance Indicators	20.62%
Recently Killed Coral	0.00%
Rubble	20.62%
Silt	0.00%
Pollution Indicators	1.88%
Nutrient Indicator Algae	0.00%
Sponge	1.88%

Fish per 500m ³	
Aquarium Fish	6.25
Butterfly Fish	3.50
Orangespine Unicornfish	0.75
Yellow Tang	2.00
Food Fish	1.50
Jacks	0.25
Yellowfin Goatfish	0.00
Parrotfish	0.75
Snapper	0.00
Moray Eel	0.50
Invasive	0.25
Blueline Snapper	0.00
Peacock Grouper	0.25

Invertebrates per 100m ²	
Aquarium Invertebrates	1.00
Banded Coral Shrimp	1.00
Curio	0.25
Cowries	0.00
Pencil Urchin	0.25
Triton	0.00
Food Invertebrates	1.50
Collector Urchin	1.50
Lobster	0.00
Ecological Imbalance / Predator Outbreak	14.50
Long Spined Black Sea Urchin	14.50
Crown of Thorns Sea Star	0.00

Impacts	
Coral Bleaching % Population	0.00%
Coral Bleaching % Colony	0.00%
Black Band Disease % Population	0.00%
White Band Disease % Population	0.00%
Coral Damage: Boat / Anchor	0.00
Coral Damage: Dyanmite	0.00
Coral Damage: Other	0.00
Trash: Fish Nets	0.50
Trash: General	0.00

Megafauna / Rare Species per 500m ³	
Sharks	0.00
Turtles	0.00
Manta Rays	0.00
Other Megafauna	0.00

Island: Hawai'i



Region: West Hawai'i

Sub Region: Pine Trees

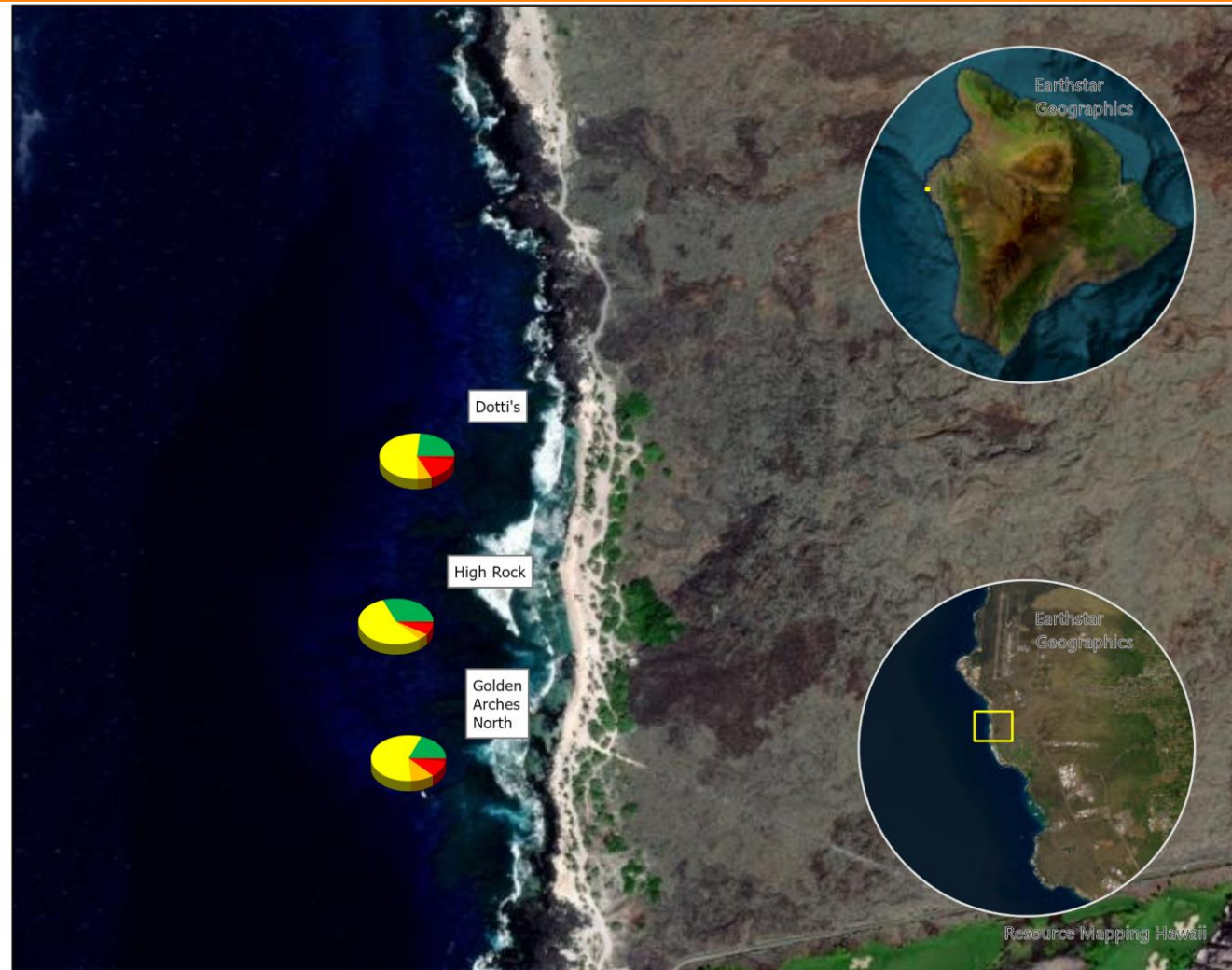
Sites:

- Dotti's
- High Rock
- Golden Arches North



Pine Trees

Year: 2024



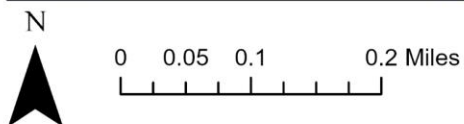
Legend

Substrate



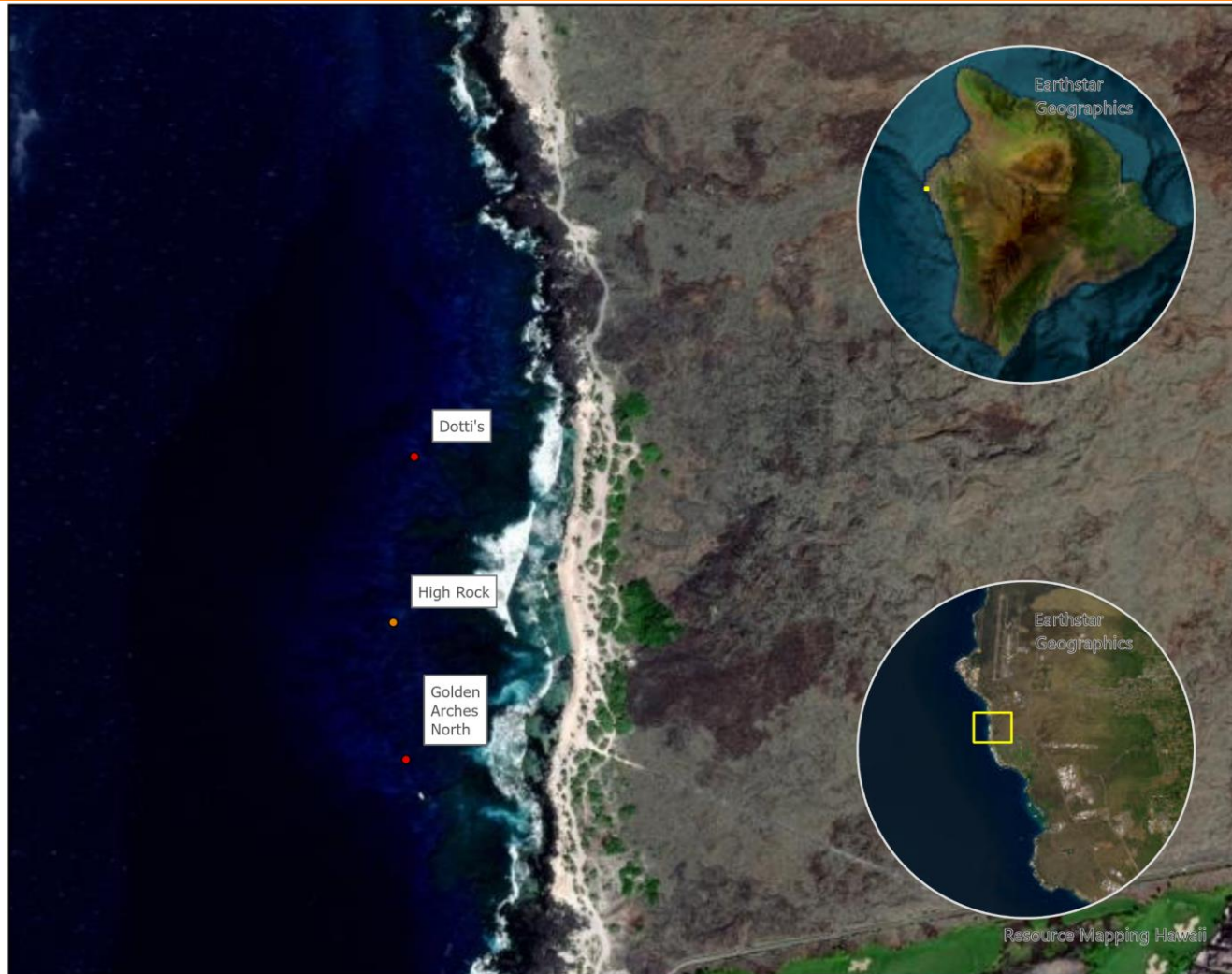
- Live Coral Cover
- Other Cover
- Available Substrate
- Sand
- Disturbance Indicators
- Pollution Indicators

Reef Check substrate surveys are conducted using a Point Sampling method every 50 centimeters along 4 x 20 meter transects.



Pine Trees

Year: 2024

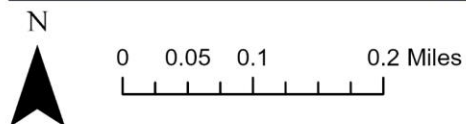


Legend

Hard Coral (HC)

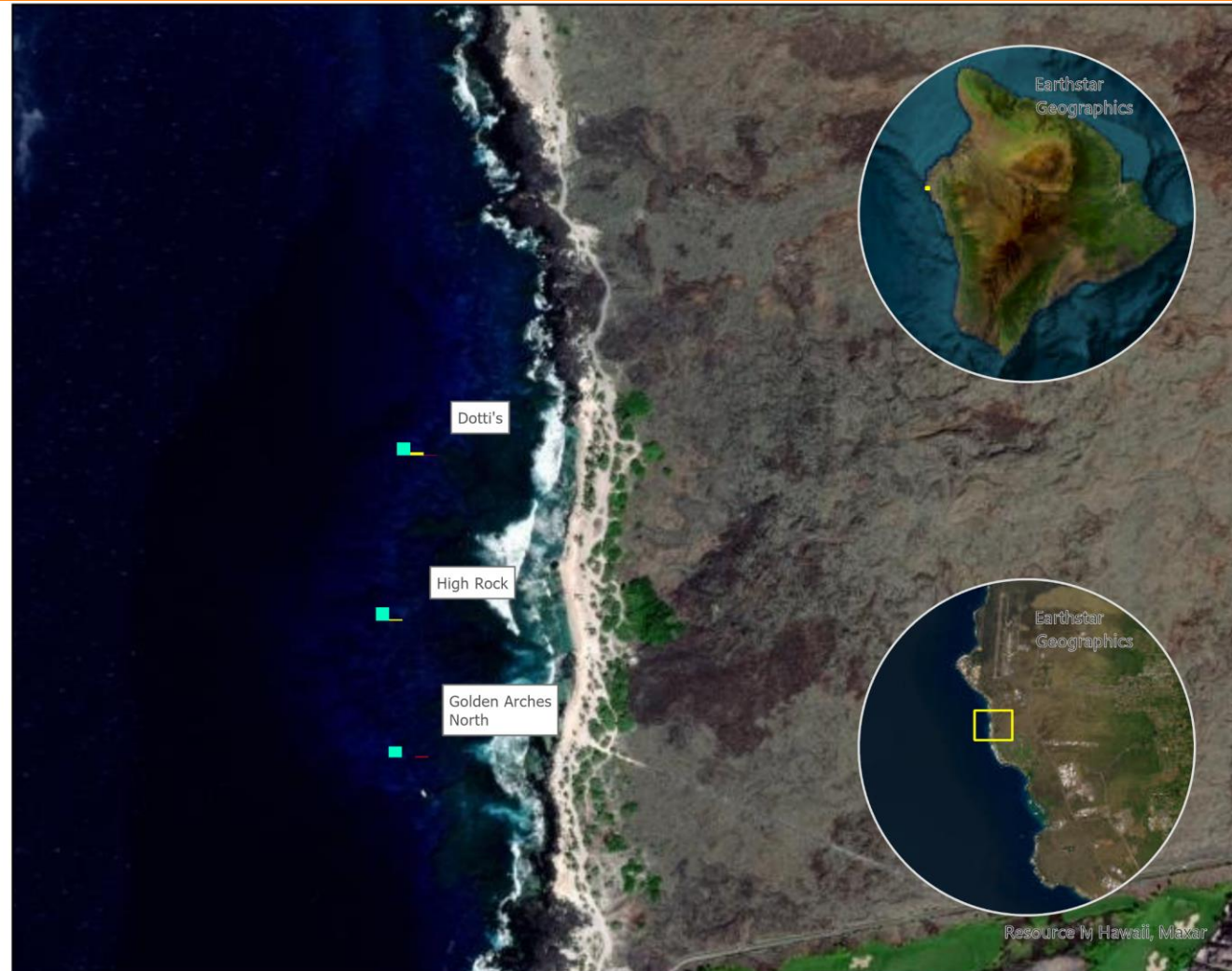
- Excellent 75.01 - 100.00%
- Good 50.01% - 75.00%
- Fair 25.01% - 50.00%
- Poor \leq 25%

Reef Check substrate surveys are conducted using a Point Sampling method every 50 centimeters along 4 x 20 meter transects.



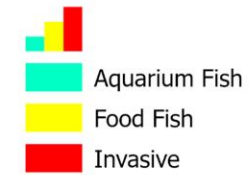
Pine Trees

Year: 2024

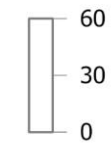


Legend

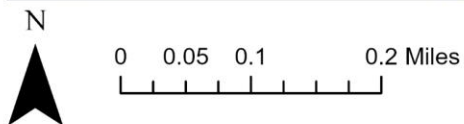
Fish



Selected fields

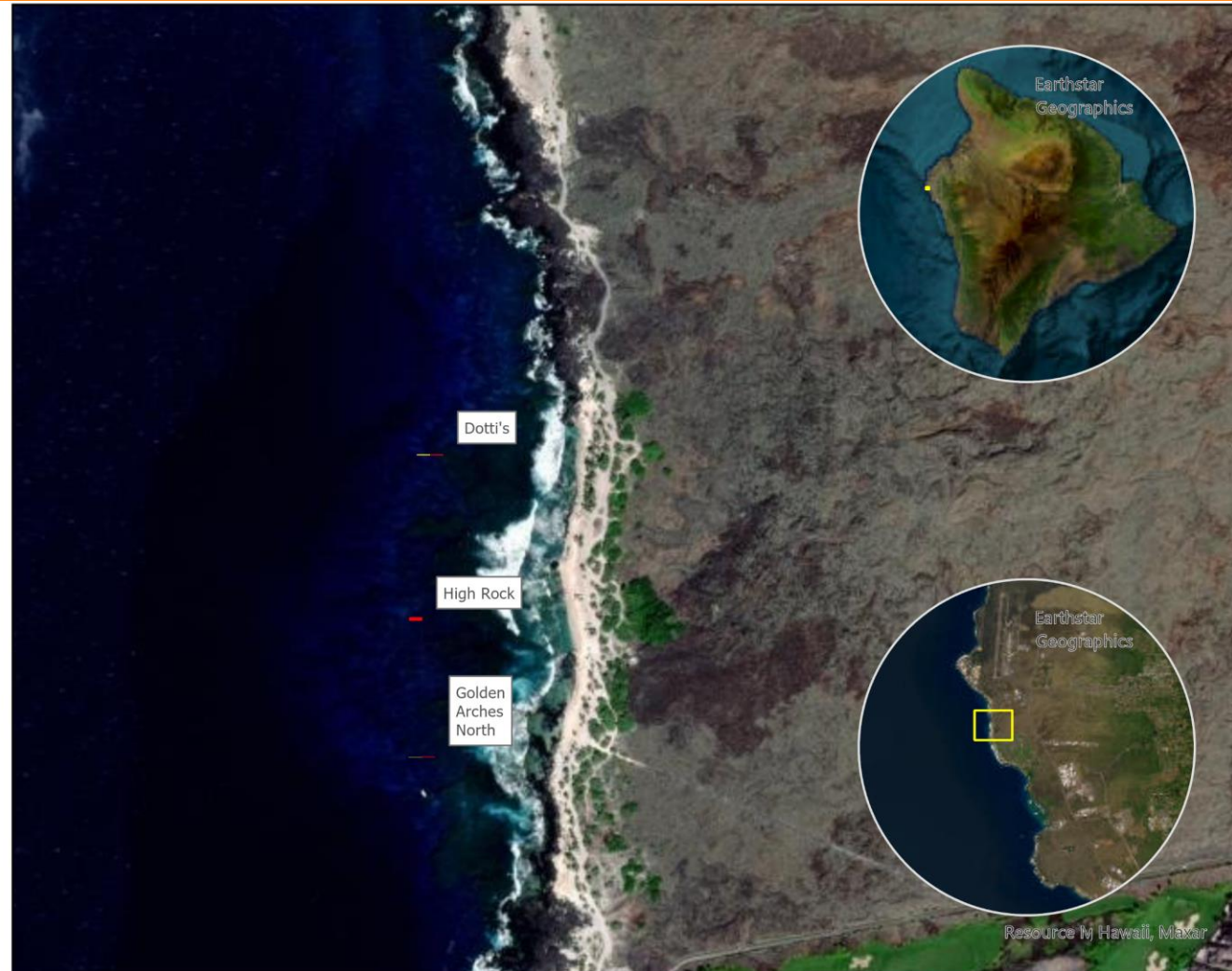


Reef Check fish surveys are conducted along 4 x 20 meter long x 5 meter wide x 5 meter high corridors.

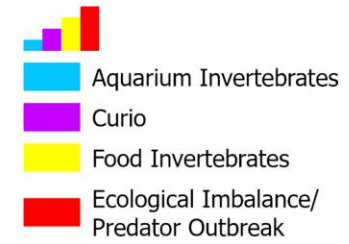


Pine Trees

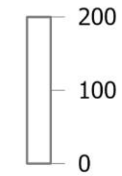
Year: 2024



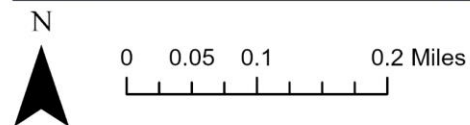
Legend



Selected fields

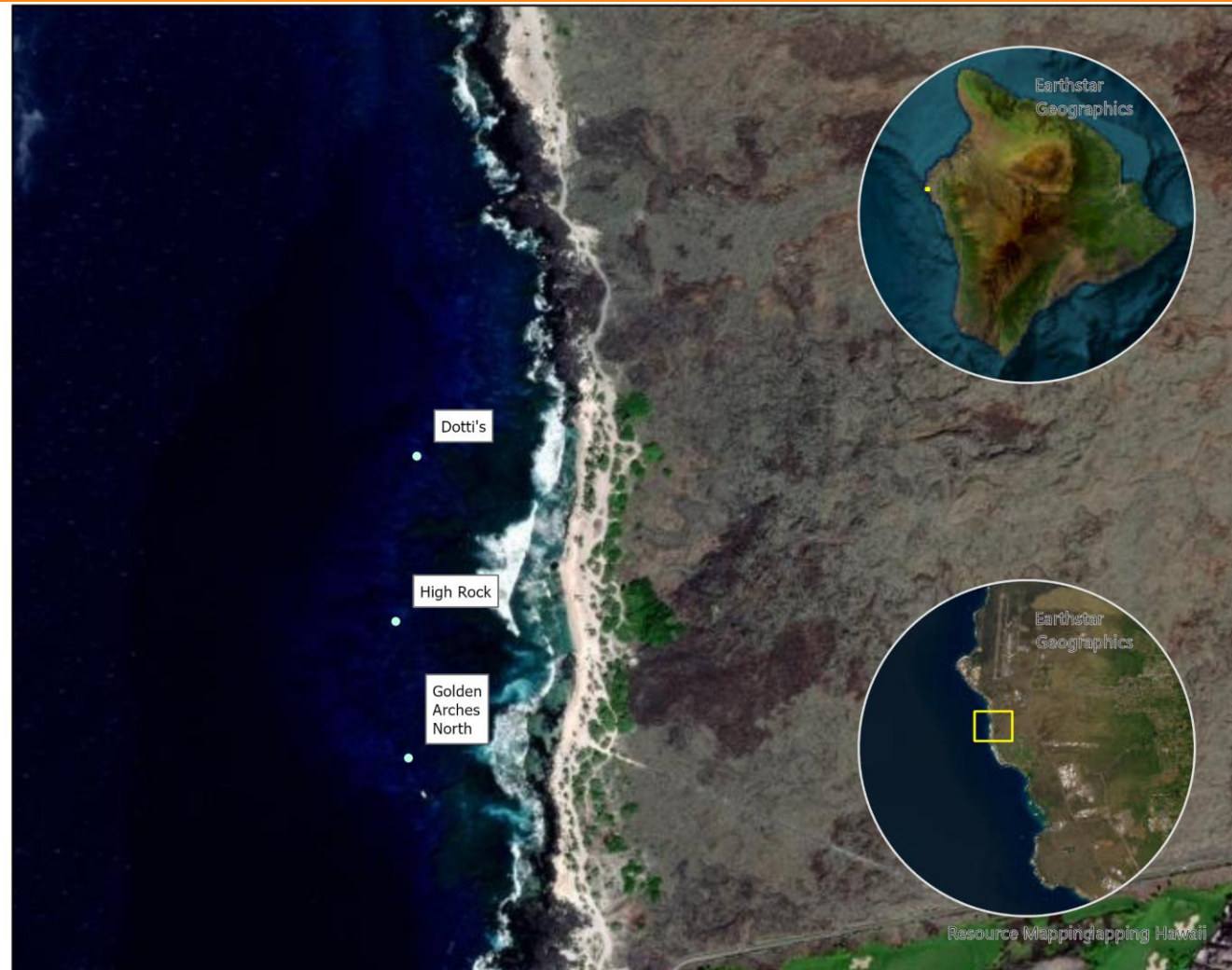


Reef Check invertebrate surveys are conducted along 4 x 20 meter long x 5 meter wide belts.



Pine Trees

Year: 2024

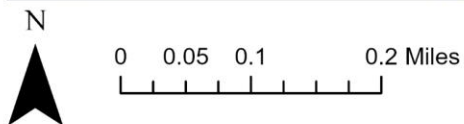


Legend

Bleaching (% of population)*

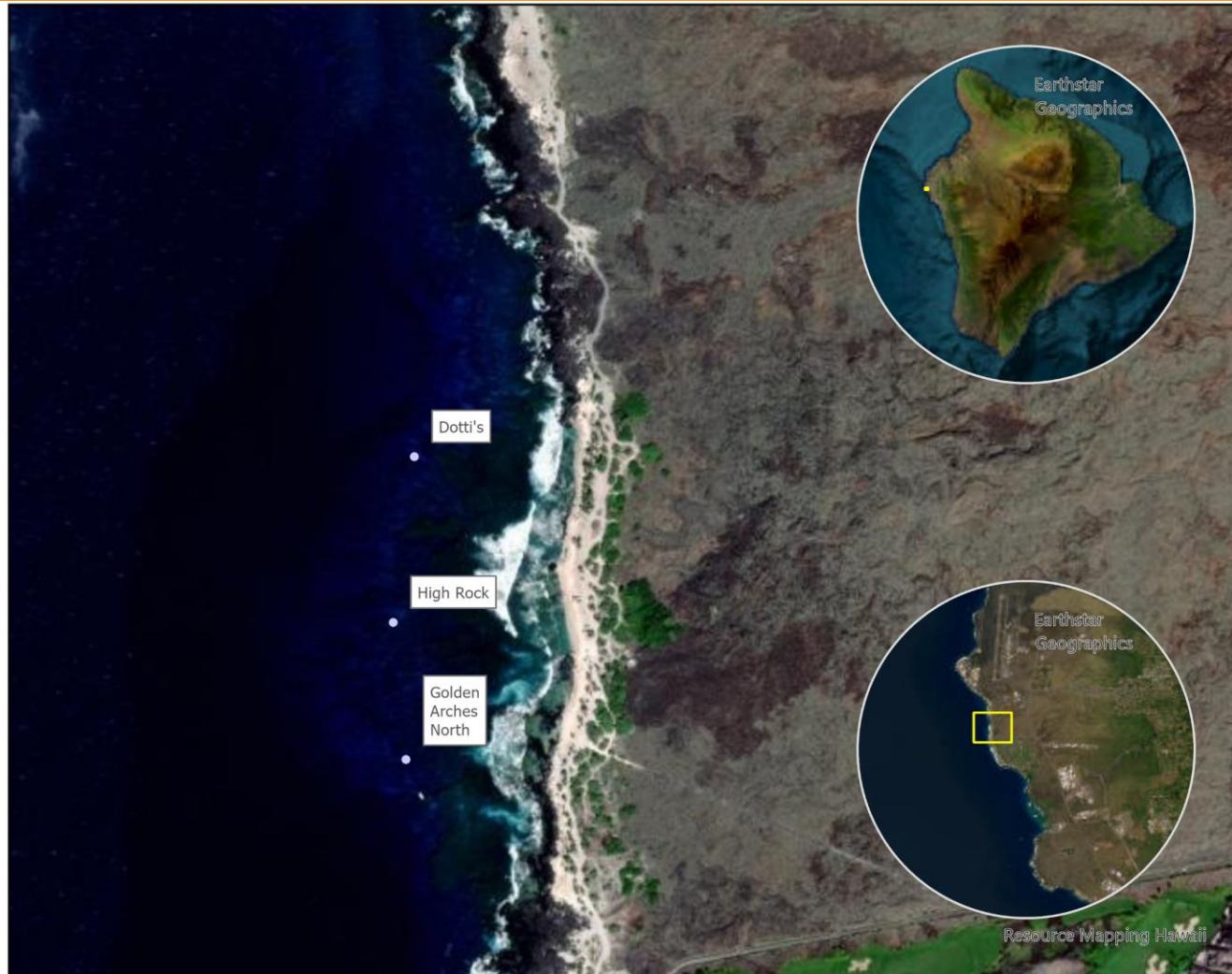
- 75.01 - 100.00%
- 50.00 - 75.00%
- 25.01 - 50.00%
- 0.01 - 25.00%
- No Bleaching Observed

Reef Check impact surveys are conducted along 4 x 20 meter long x 5 meter wide belts.



Pine Trees

Year: 2024

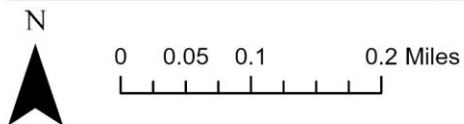


Legend

Black Band

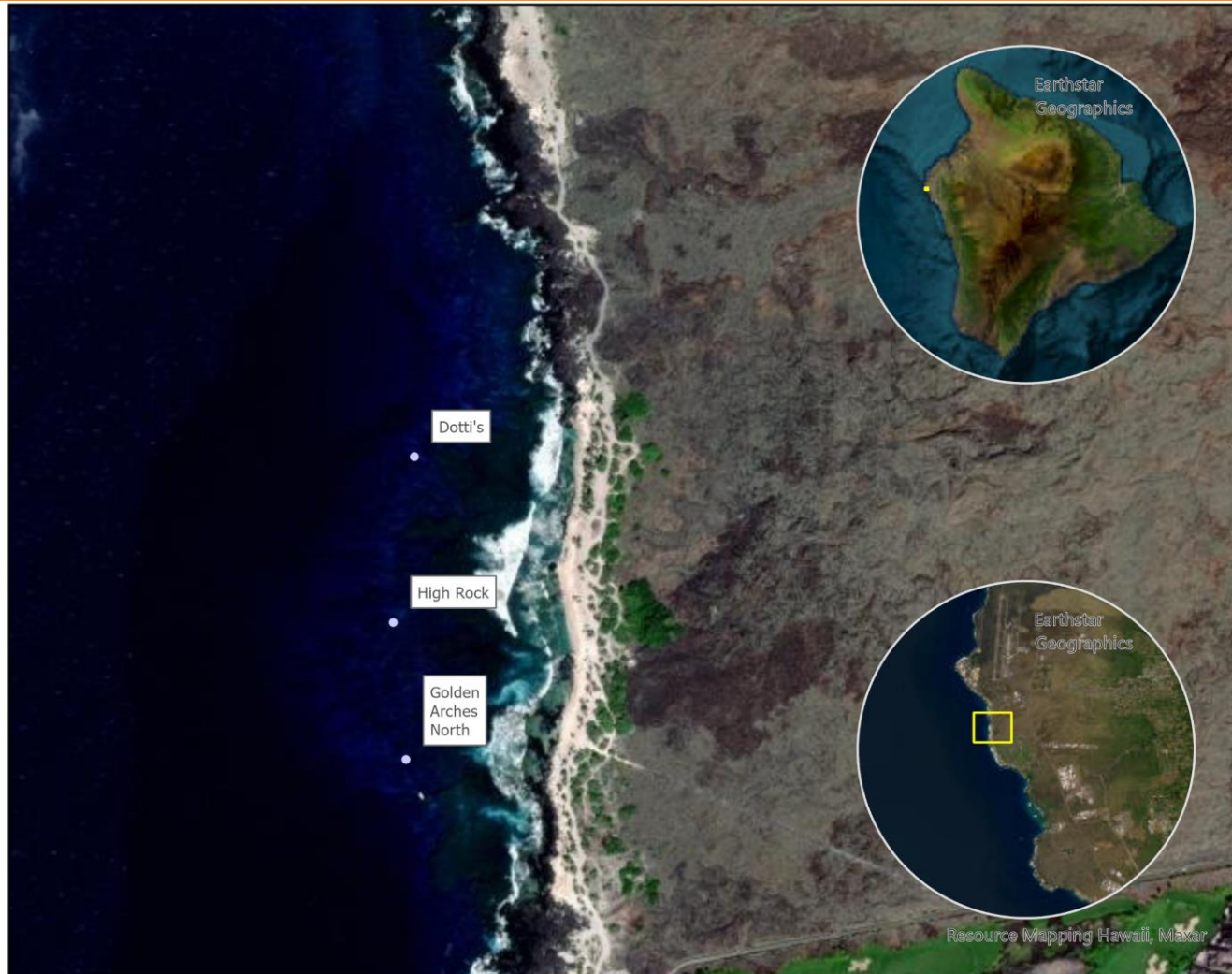
- No Black Band Disease Observed

Reef Check impact surveys are conducted along 4 x 20 meter long x 5 meter wide belts.



Pine Trees

Year: 2024



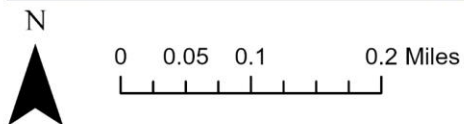
Legend

White Band
Disease

White Band

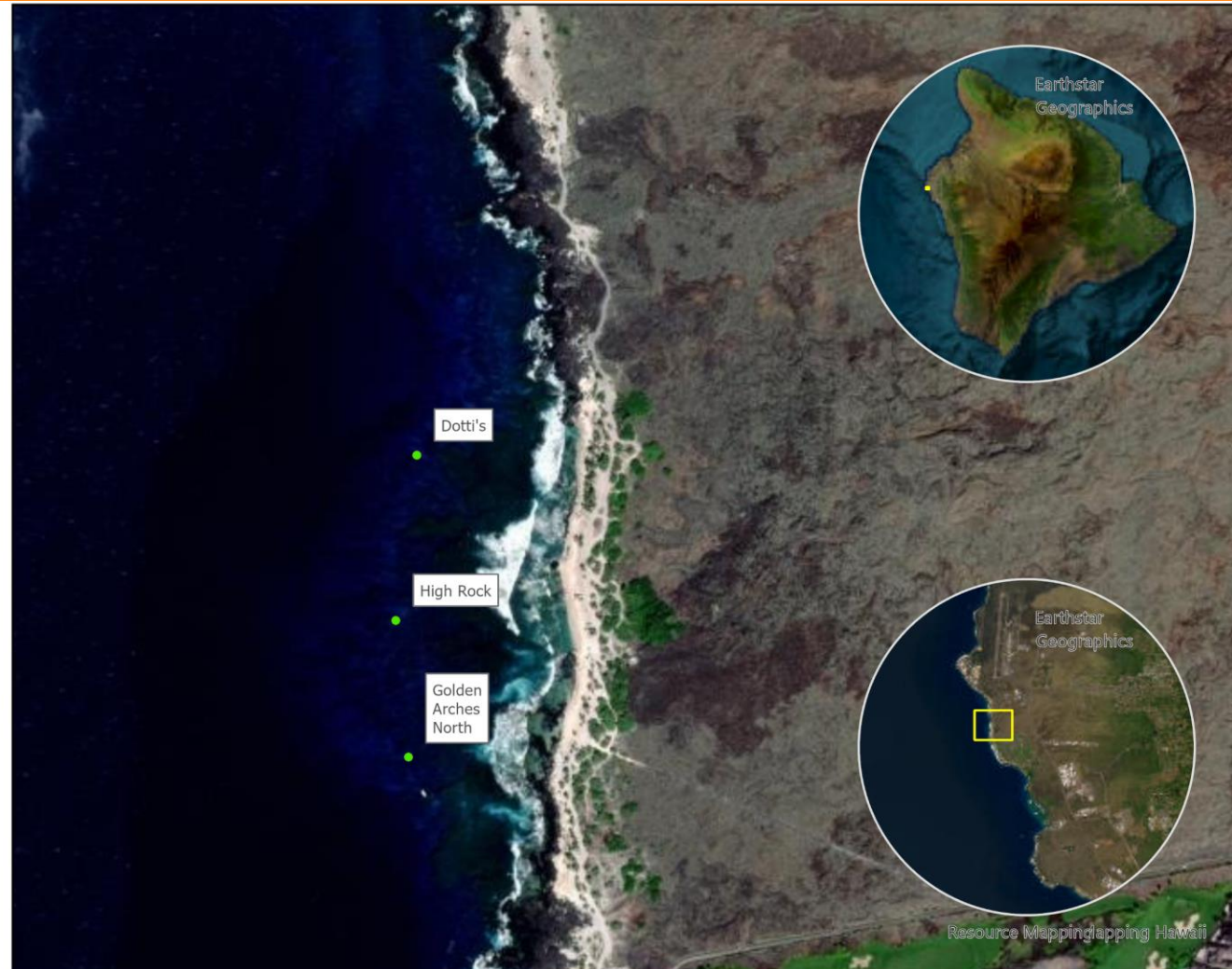
- No White Band Disease Observed

Reef Check impact surveys are conducted along 4 x 20 meter long x 5 meter wide belts.



Pine Trees

Year: 2024



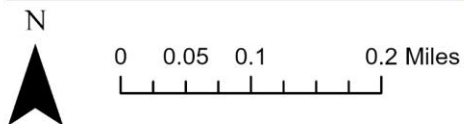
Legend

Coral Damage:
Boat/Anchor

Coral damage: boat/
anchor

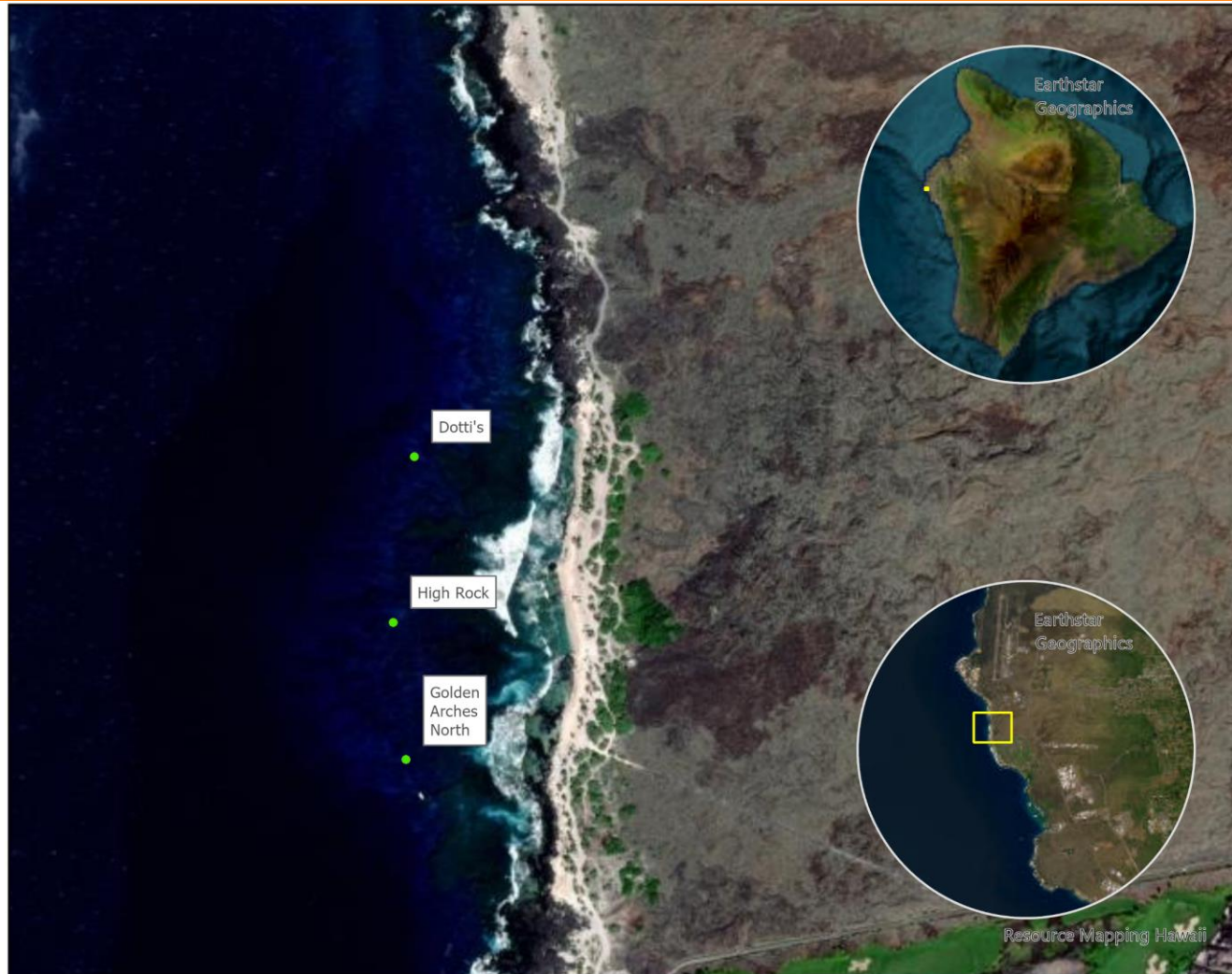
- High 2.01 - 3.00
- Medium 1.01 - 2.00
- Low 0.01 - 1.00
- No Damage Observed

Reef Check impact surveys are conducted along 4 x 20 meter long x 5 meter wide belts.



Pine Trees

Year: 2024



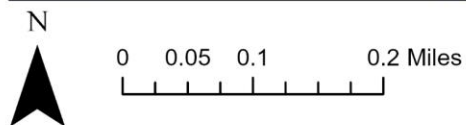
Legend

Coral Damage:
Dynamite

Coral damage:
dynamite

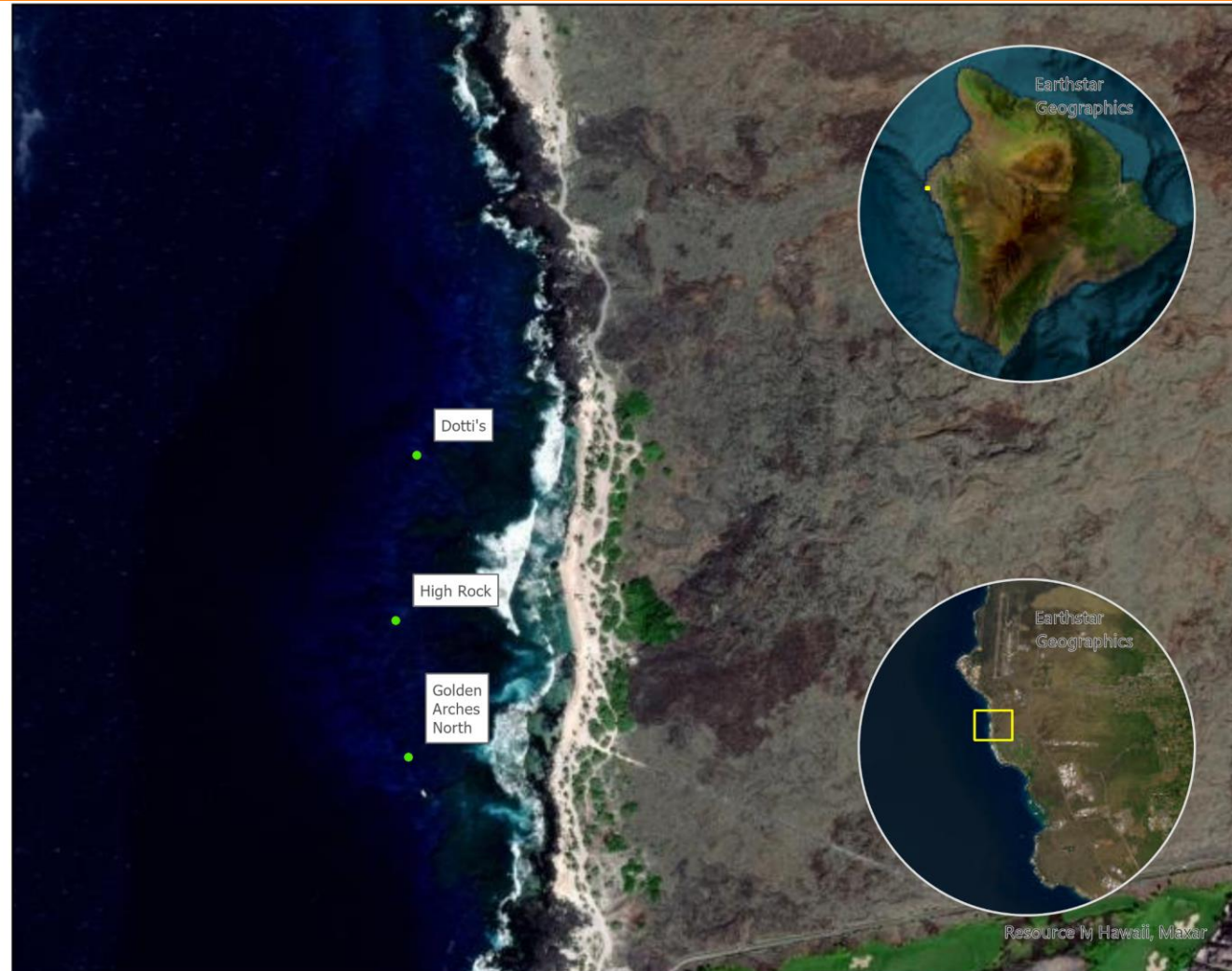
- No Damage Observed

Reef Check impact surveys are conducted along 4 x 20 meter long x 5 meter wide belts.



Pine Trees

Year: 2024



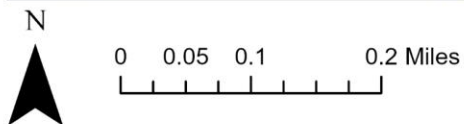
Legend

Coral Damage:
Other

Coral damage: other

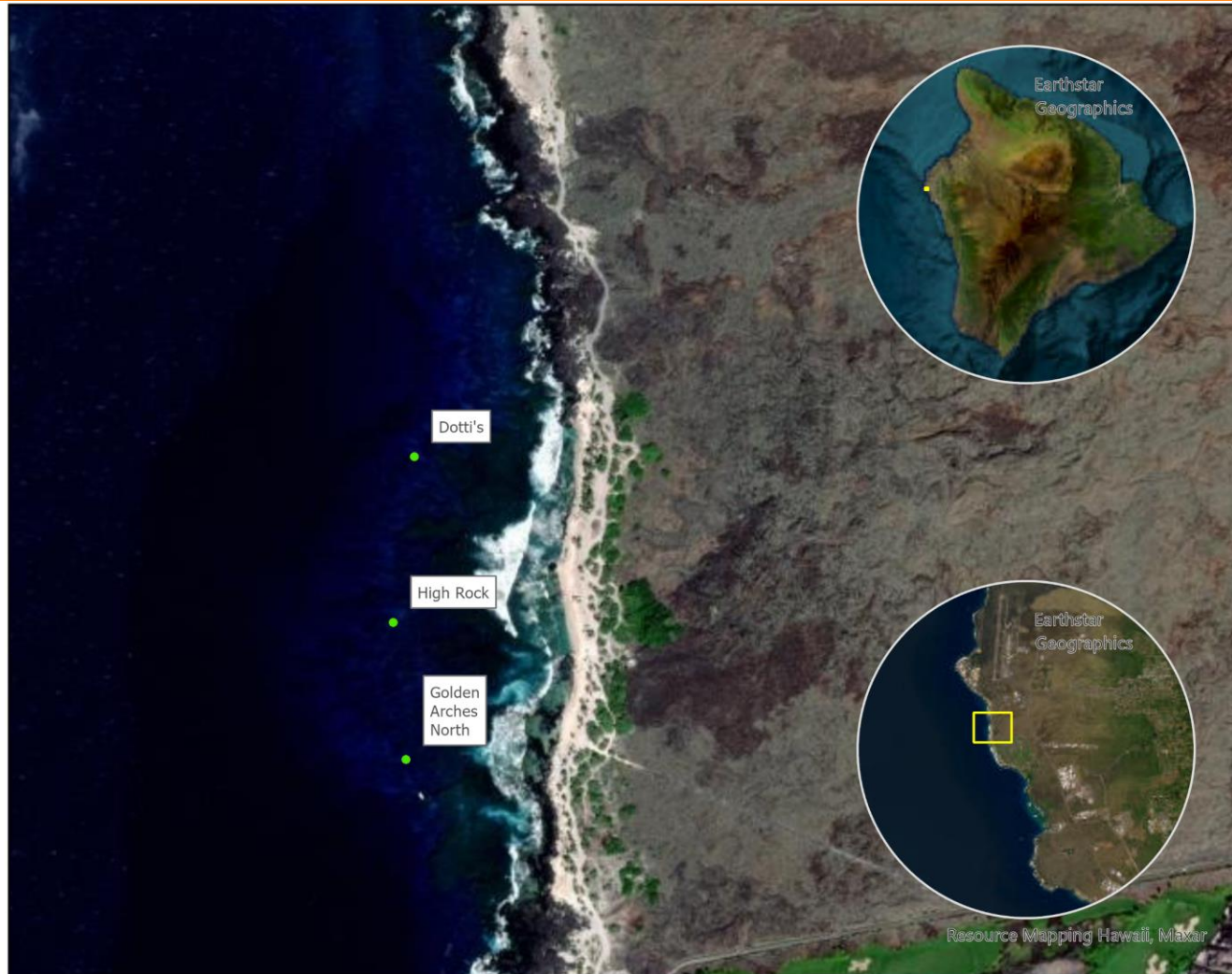
- High 2.01 - 3.00
- Medium 1.01 - 2.00
- Low 0.01 - 1.00
- No Damage Observed

Reef Check impact surveys are conducted along 4 x 20 meter long x 5 meter wide belts.



Pine Trees

Year: 2024



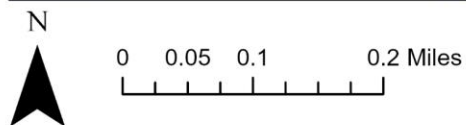
Legend

Trash: Fish Nets

Trash: fish nets

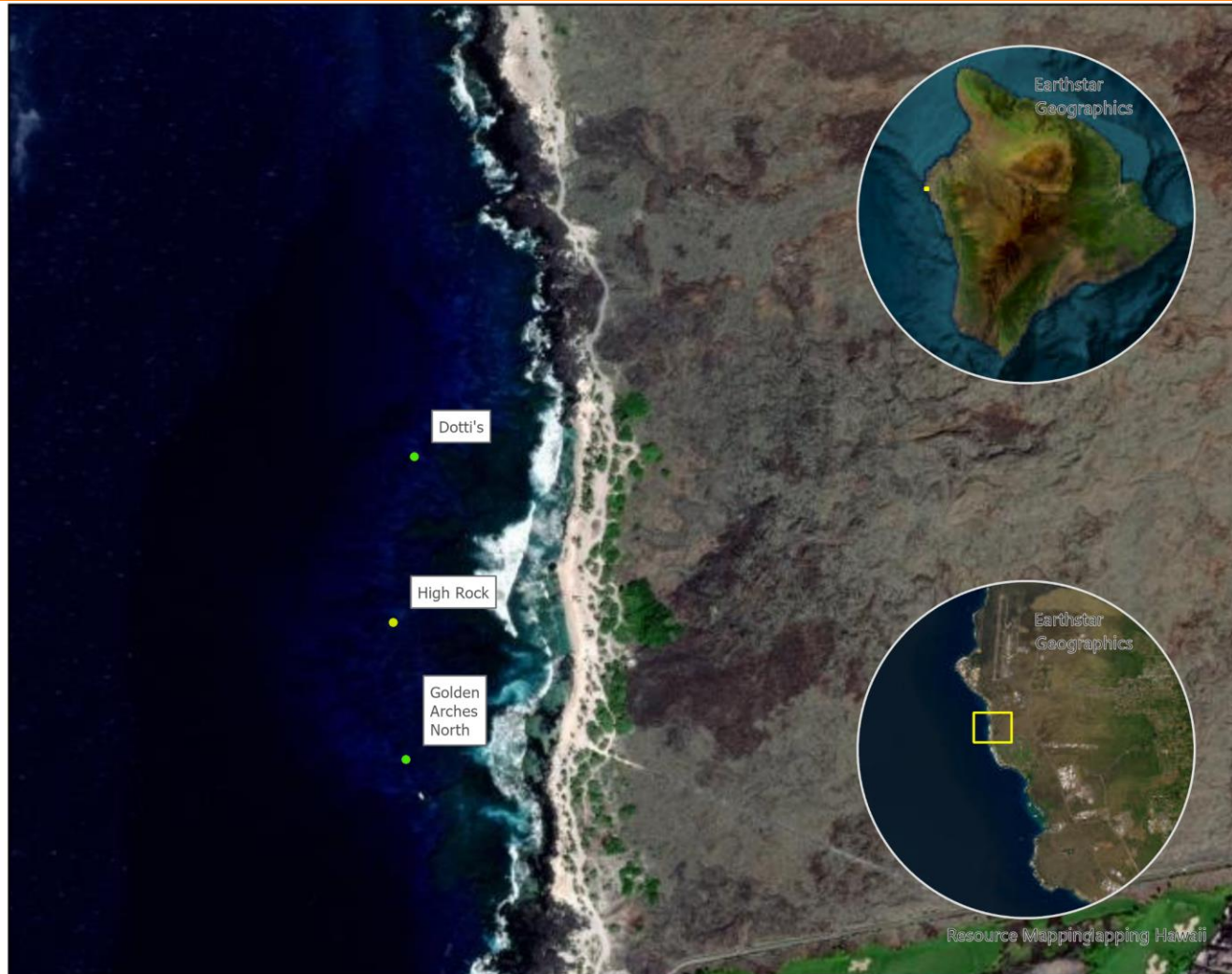
● No Trash Observed

Reef Check impact surveys are conducted along 4 x 20 meter long x 5 meter wide belts.



Pine Trees

Year: 2024



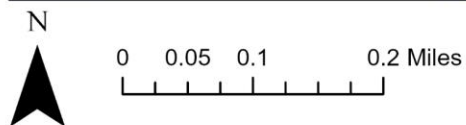
Legend

Trash: General

Trash: general

- High 2.01 - 3.00
- Medium 1.01 - 2.00
- Low 0.01 - 1.00
- No Trash Observed

Reef Check impact surveys are conducted along 4 x 20 meter long x 5 meter wide belts.



Island: Hawai'i



Region: West Hawai'i
 Sub Region: Pine Trees
 Sites:

- Dotti's
- High Rock
- Golden Arches North

Survey Date: 9/30/2024
 Latitude: 19.70676
 Longitude: -156.05
 Depth (m): 10

Substrate	
Live Coral Cover	22.50%
Hard Coral	22.50%
Soft Coral	0.00%
Other	0.00%
Other	0.00%
Available Substrate	50.63%
Rock	50.63%
Sand	7.50%
Sand	7.50%
Disturbance Indicators	14.38%
Recently Killed Coral	0.63%
Rubble	13.75%
Silt	0.00%
Pollution Indicators	5.00%
Nutrient Indicator Algae	1.25%
Sponge	3.75%

Fish per 500m ³	
Aquarium Fish	7.25
Butterfly Fish	1.50
Orangespine Unicornfish	1.50
Yellow Tang	4.25
Food Fish	1.75
Jacks	1.00
Yellowfin Goatfish	0.00
Parrotfish	0.50
Snapper	0.00
Moray Eel	0.25
Invasive	0.25
Blueline Snapper	0.00
Peacock Grouper	0.25

Invertebrates per 100m ²	
Aquarium Invertebrates	0.00
Banded Coral Shrimp	0.00
Curio	0.00
Cowries	0.00
Pencil Urchin	0.00
Triton	0.00
Food Invertebrates	1.50
Collector Urchin	1.25
Lobster	0.25
Ecological Imbalance / Predator Outbreak	1.25
Long Spined Black Sea Urchin	0.75
Crown of Thorns Sea Star	0.50

Impacts	
Coral Bleaching % Population	0.00%
Coral Bleaching % Colony	0.00%
Black Band Disease % Population	0.00%
White Band Disease % Population	0.00%
Coral Damage: Boat / Anchor	0.00
Coral Damage: Dyanmite	0.00
Coral Damage: Other	0.00
Trash: Fish Nets	0.25
Trash: General	0.00

Megafauna / Rare Species per 500m ³	
Sharks	0.00
Turtles	0.25
Manta Rays	0.00
Other Megafauna	0.25

Island: Hawai'i



Region: West Hawai'i
 Sub Region: Pine Trees
 Sites:

- Dotti's
- High Rock
- Golden Arches North

Survey Date: 9/27/2024
 Latitude: 19.70491
 Longitude: -156.0503
 Depth (m): 9

Substrate	
Live Coral Cover	32.50%
Hard Coral	32.50%
Soft Coral	0.00%
Other	0.00%
Other	0.00%
Available Substrate	56.25%
Rock	56.25%
Sand	4.37%
Sand	4.37%
Disturbance Indicators	6.25%
Recently Killed Coral	1.25%
Rubble	5.00%
Silt	0.00%
Pollution Indicators	0.63%
Nutrient Indicator Algae	0.00%
Sponge	0.63%

Fish per 500m ³	
Aquarium Fish	7.50
Butterfly Fish	0.50
Orangespine Unicornfish	0.75
Yellow Tang	6.25
Food Fish	0.75
Jacks	0.00
Yellowfin Goatfish	0.00
Parrotfish	0.50
Snapper	0.00
Moray Eel	0.25
Invasive	0.00
Blueline Snapper	0.00
Peacock Grouper	0.00

Invertebrates per 100m ²	
Aquarium Invertebrates	0.00
Banded Coral Shrimp	0.00
Curio	0.00
Cowries	0.00
Pencil Urchin	0.00
Triton	0.00
Food Invertebrates	0.00
Collector Urchin	0.00
Lobster	0.00
Ecological Imbalance / Predator Outbreak	4.75
Long Spined Black Sea Urchin	4.50
Crown of Thorns Sea Star	0.25

Impacts	
Coral Bleaching % Population	0.00%
Coral Bleaching % Colony	0.00%
Black Band Disease % Population	0.00%
White Band Disease % Population	0.00%
Coral Damage: Boat / Anchor	0.00
Coral Damage: Dyanmite	0.00
Coral Damage: Other	0.00
Trash: Fish Nets	0.25
Trash: General	0.25

Megafauna / Rare Species per 500m ³	
Sharks	0.00
Turtles	0.00
Manta Rays	0.00
Other Megafauna	0.00

Island: Hawai'i



Region: West Hawai'i
 Sub Region: Pine Trees

Sites:

- Dotti's
- High Rock
- Golden Arches North

Survey Date: 10/2/2024

Latitude: 19.70338

Longitude: -156.0501

Depth (m): 10

Substrate	
Live Coral Cover	17.50%
Hard Coral	17.50%
Soft Coral	0.00%
Other	0.00%
Other	0.00%
Available Substrate	58.12%
Rock	58.12%
Sand	11.88%
Sand	11.88%
Disturbance Indicators	9.38%
Recently Killed Coral	1.88%
Rubble	7.50%
Silt	0.00%
Pollution Indicators	3.12%
Nutrient Indicator Algae	0.00%
Sponge	3.12%

Fish per 500m ³	
Aquarium Fish	6.11
Butterfly Fish	5.75
Orangespine Unicornfish	0.25
Yellow Tang	0.11
Food Fish	0.03
Jacks	0.00
Yellowfin Goatfish	0.00
Parrotfish	0.02
Snapper	0.00
Moray Eel	0.01
Invasive	0.50
Blueline Snapper	0.00
Peacock Grouper	0.50

Invertebrates per 100m ²	
Aquarium Invertebrates	0.00
Banded Coral Shrimp	0.00
Curio	0.00
Cowries	0.00
Pencil Urchin	0.00
Triton	0.00
Food Invertebrates	0.50
Collector Urchin	0.50
Lobster	0.00
Ecological Imbalance / Predator Outbreak	1.00
Long Spined Black Sea Urchin	1.00
Crown of Thorns Sea Star	0.00

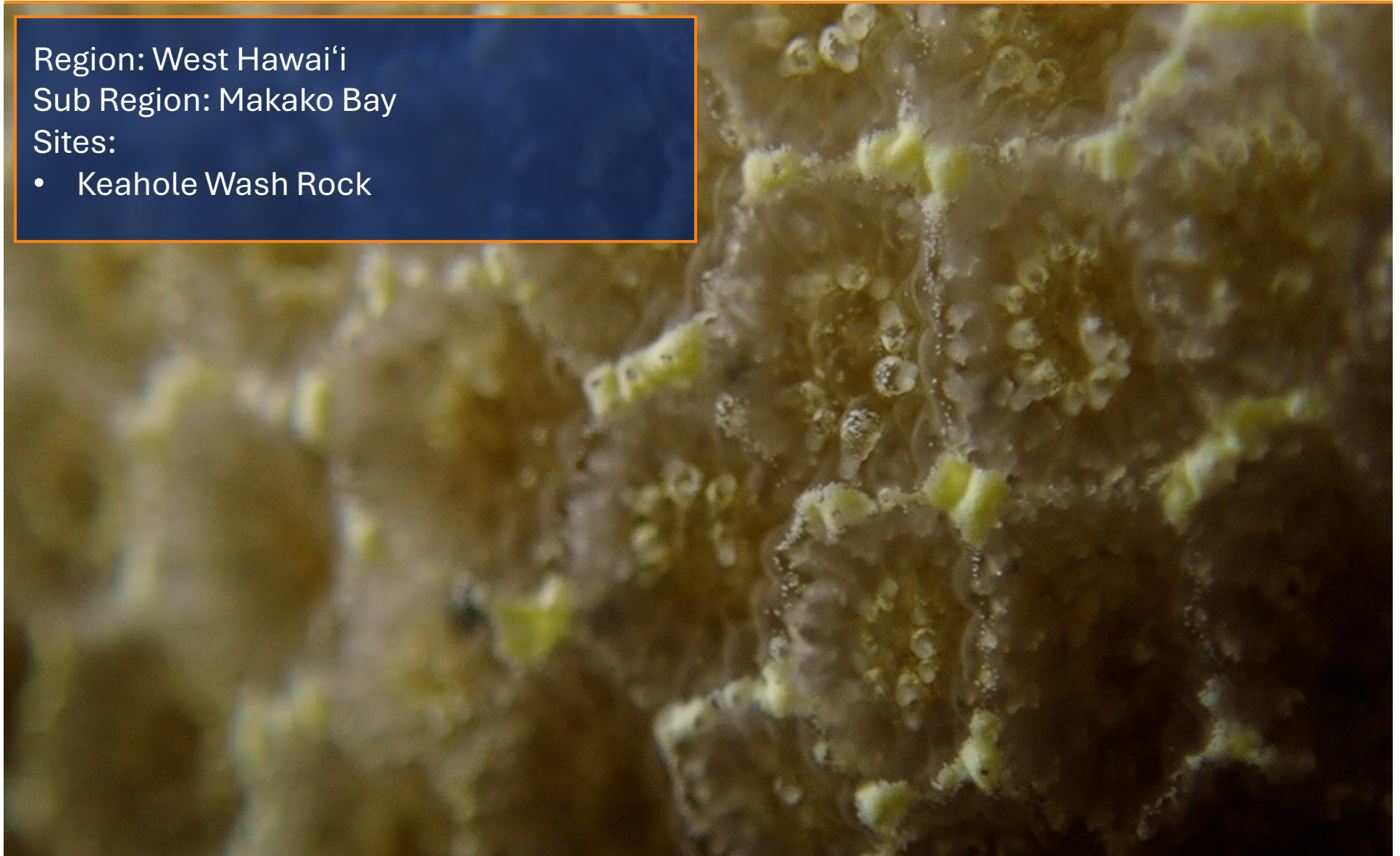
Impacts	
Coral Bleaching % Population	0.00%
Coral Bleaching % Colony	0.00%
Black Band Disease % Population	0.00%
White Band Disease % Population	0.00%
Coral Damage: Boat / Anchor	0.00
Coral Damage: Dyanmite	0.00
Coral Damage: Other	0.00
Trash: Fish Nets	0.01
Trash: General	0.00

Megafauna / Rare Species per 500m ³	
Sharks	0.00
Turtles	0.00
Manta Rays	0.00
Other Megafauna	0.00

Island: Hawai'i



Region: West Hawai'i
Sub Region: Makako Bay
Sites:
• Keahole Wash Rock



Makako Bay

Year: 2024



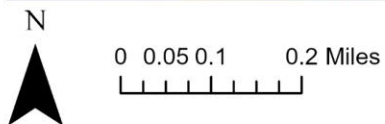
Legend

Substrate



- Live Coral Cover
- Other Cover
- Available Substrate
- Sand
- Disturbance Indicators
- Pollution Indicators

Reef Check substrate surveys are conducted using a Point Sampling method every 50 centimeters along 4 x 20 meter transects.



Makako Bay

Year: 2024

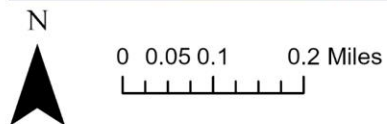


Legend

Hard Coral (HC)

- Excellent 75.01 - 100.00%
- Good 50.01% - 75.00%
- Fair 25.01% - 50.00%
- Poor ≤ 25%

Reef Check substrate surveys are conducted using a Point Sampling method every 50 centimeters along 4 x 20 meter transects.



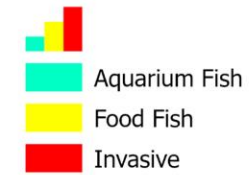
Makako Bay

Year: 2024

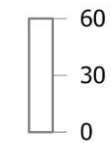


Legend

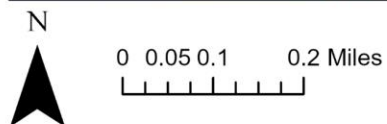
Fish



Selected fields



Reef Check fish surveys are conducted along 4 x 20 meter long x 5 meter wide x 5 meter high corridors.

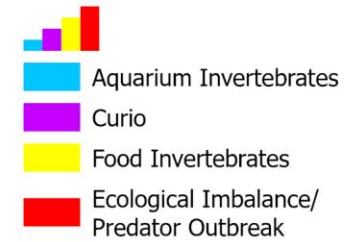


Makako Bay

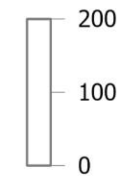
Year: 2024



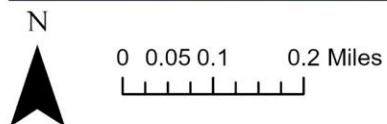
Legend



Selected fields



Reef Check invertebrate surveys are conducted along 4 x 20 meter long x 5 meter wide belts.



Makako Bay

Year: 2024

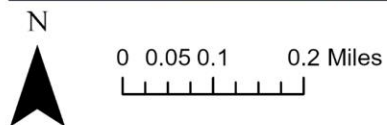


Legend

Bleaching (% of population)*

- 75.01 - 100.00%
- 50.00 - 75.00%
- 25.01 - 50.00%
- 0.01 - 25.00%
- No Bleaching Observed

Reef Check impact surveys are conducted along 4 x 20 meter long x 5 meter wide belts.



Makako Bay

Year: 2024

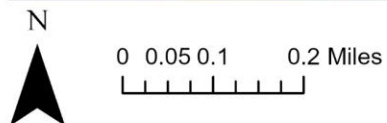


Legend

Black Band

- No Black Band Disease Observed

Reef Check impact surveys are conducted along 4 x 20 meter long x 5 meter wide belts.



Makako Bay

Year: 2024



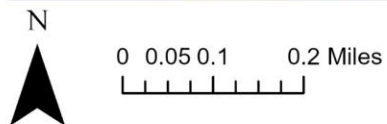
Legend

White Band
Disease

White Band

- No White Band Disease Observed

Reef Check impact surveys are conducted along 4 x 20 meter long x 5 meter wide belts.



Makako Bay

Year: 2024



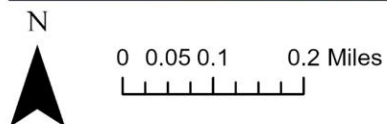
Legend

Coral Damage:
Boat/Anchor

Coral damage: boat/
anchor

- High 2.01 - 3.00
- Medium 1.01 - 2.00
- Low 0.01 - 1.00
- No Damage Observed

Reef Check impact surveys are conducted along 4 x 20 meter long x 5 meter wide belts.



Makako Bay

Year: 2024



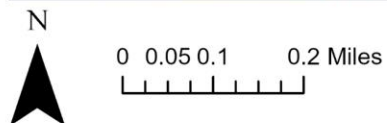
Legend

Coral Damage:
Dynamite

Coral damage:
dynamite

● No Damage Observed

Reef Check impact surveys are conducted along 4 x 20 meter long x 5 meter wide belts.



Makako Bay

Year: 2024



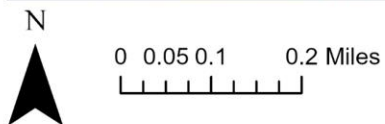
Legend

Coral Damage:
Other

Coral damage: other

- High 2.01 - 3.00
- Medium 1.01 - 2.00
- Low 0.01 - 1.00
- No Damage Observed

Reef Check impact surveys are conducted along 4 x 20 meter long x 5 meter wide belts.



Makako Bay

Year: 2024



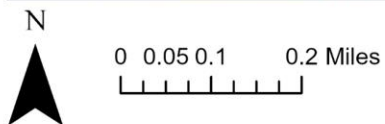
Legend

Trash: Fish Nets

Trash: fish nets

• No Trash Observed

Reef Check impact surveys are conducted along 4 x 20 meter long x 5 meter wide belts.



Makako Bay

Year: 2024



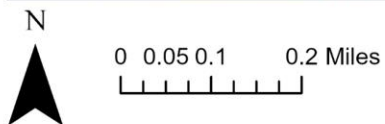
Legend

Trash: General

Trash: general

- High 2.01 - 3.00
- Medium 1.01 - 2.00
- Low 0.01 - 1.00
- No Trash Observed

Reef Check impact surveys are conducted along 4 x 20 meter long x 5 meter wide belts.



Island: Hawai'i



Region: West Hawai'i
 Sub Region: Makako Bay
 Sites:

- Keahole Wash Rock

Survey Date: 9/26/2024
 Latitude: 19.73223
 Longitude: -156.0596
 Depth (m): 10

Substrate	
Live Coral Cover	33.75%
Hard Coral	33.75%
Soft Coral	0.00%
Other	0.00%
Other	0.00%
Available Substrate	63.12%
Rock	63.12%
Sand	0.00%
Sand	0.00%
Disturbance Indicators	3.13%
Recently Killed Coral	1.88%
Rubble	1.25%
Silt	0.00%
Pollution Indicators	0.00%
Nutrient Indicator Algae	0.00%
Sponge	0.00%

Fish per 500m ³	
Aquarium Fish	13.75
Butterfly Fish	4.75
Orangespine Unicornfish	0.25
Yellow Tang	8.75
Food Fish	0.75
Jacks	0.00
Yellowfin Goatfish	0.00
Parrotfish	0.75
Snapper	0.00
Moray Eel	0.00
Invasive	0.00
Blueline Snapper	0.00
Peacock Grouper	0.00

Invertebrates per 100m ²	
Aquarium Invertebrates	0.00
Banded Coral Shrimp	0.00
Curio	0.00
Cowries	0.00
Pencil Urchin	0.00
Triton	0.00
Food Invertebrates	1.50
Collector Urchin	1.50
Lobster	0.00
Ecological Imbalance / Predator Outbreak	8.75
Long Spined Black Sea Urchin	8.75
Crown of Thorns Sea Star	0.00

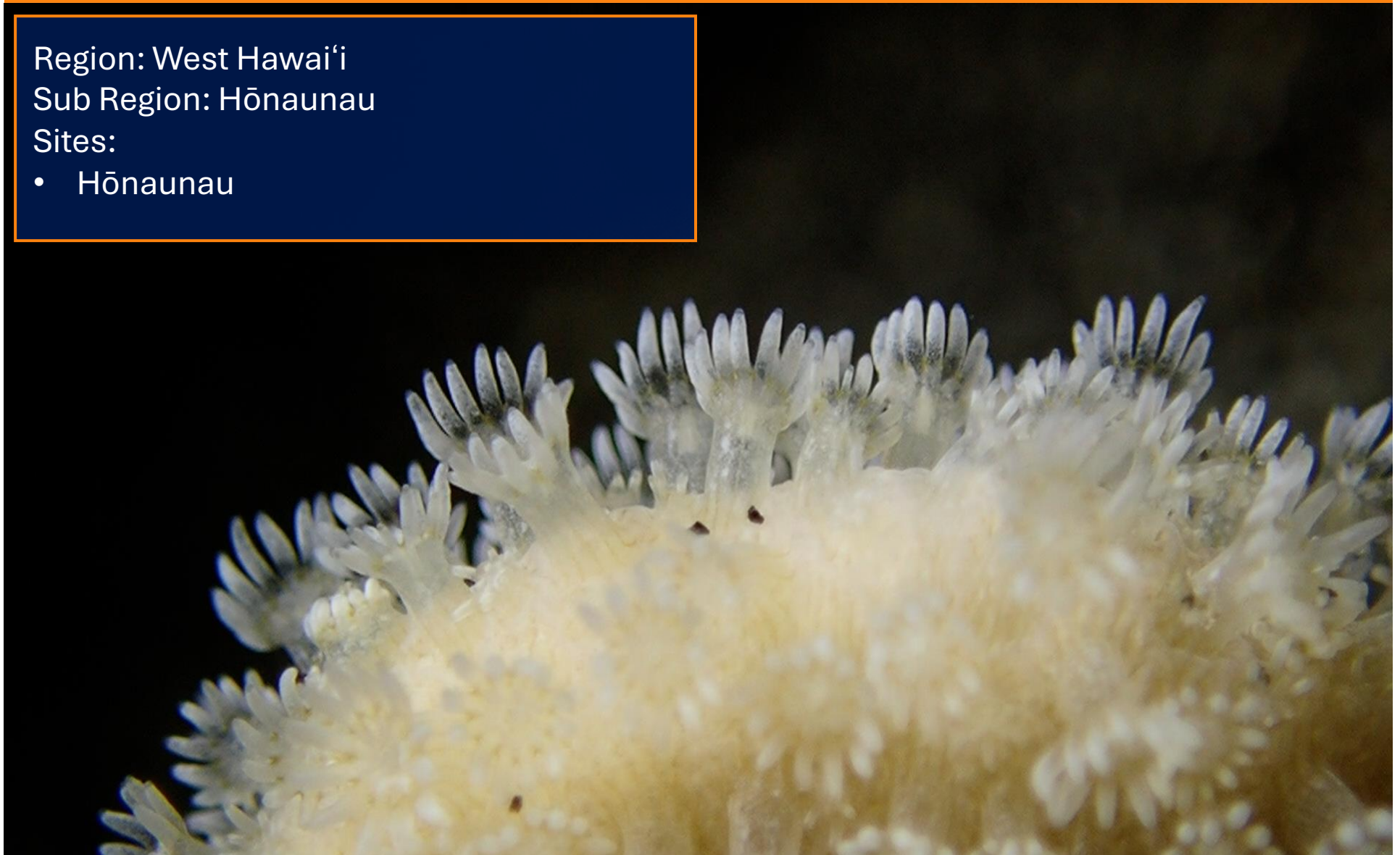
Impacts	
Coral Bleaching % Population	0.00%
Coral Bleaching % Colony	0.00%
Black Band Disease % Population	0.00%
White Band Disease % Population	0.00%
Coral Damage: Boat / Anchor	0.00
Coral Damage: Dyanmite	0.00
Coral Damage: Other	0.00
Trash: Fish Nets	0.00
Trash: General	0.00

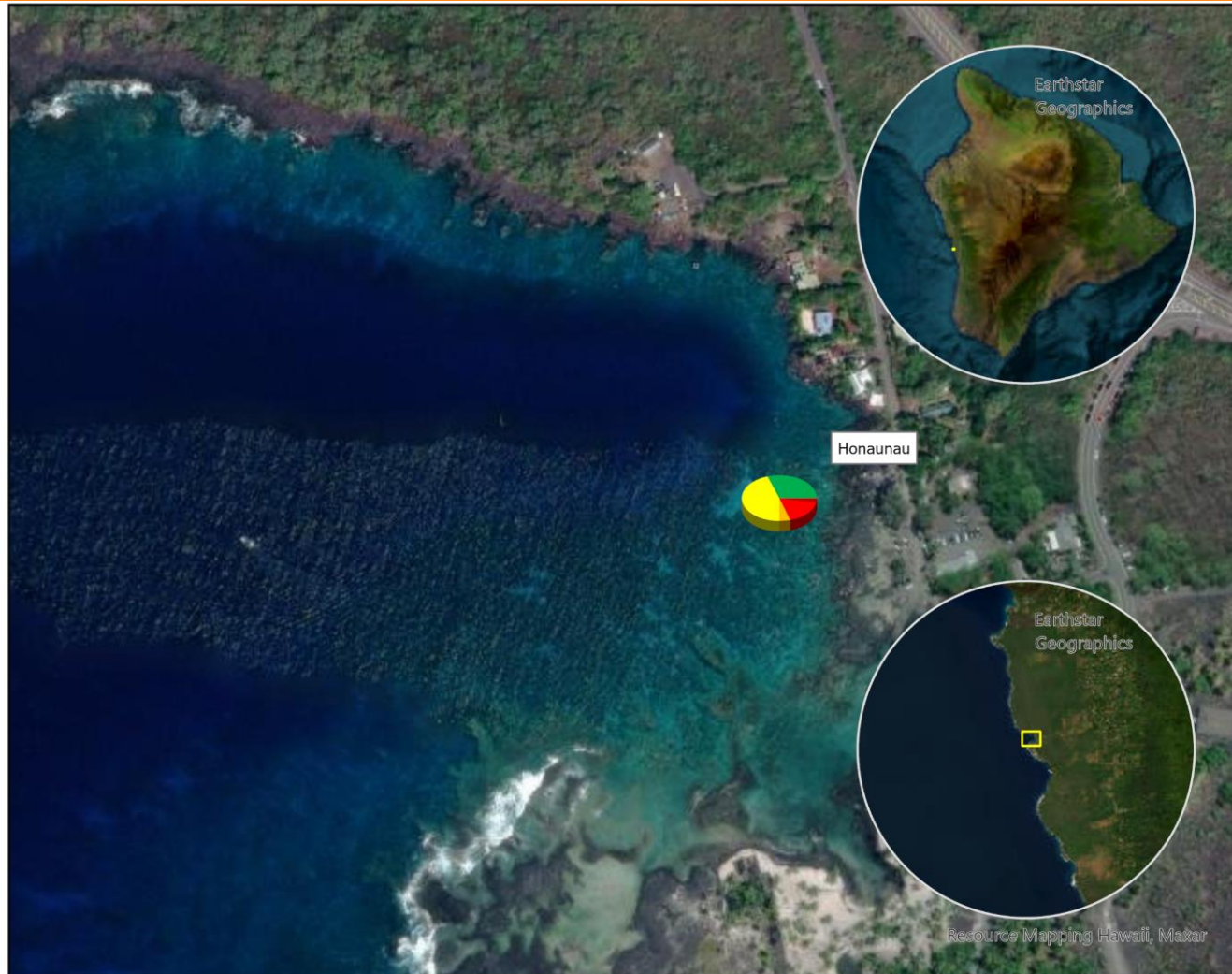
Megafauna / Rare Species per 500m ³	
Sharks	0.00
Turtles	0.00
Manta Rays	0.00
Other Megafauna	0.00

Island: Hawai'i



Region: West Hawai'i
Sub Region: Hōnaunau
Sites:
• Hōnaunau





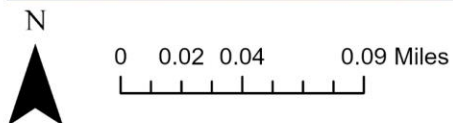
Legend

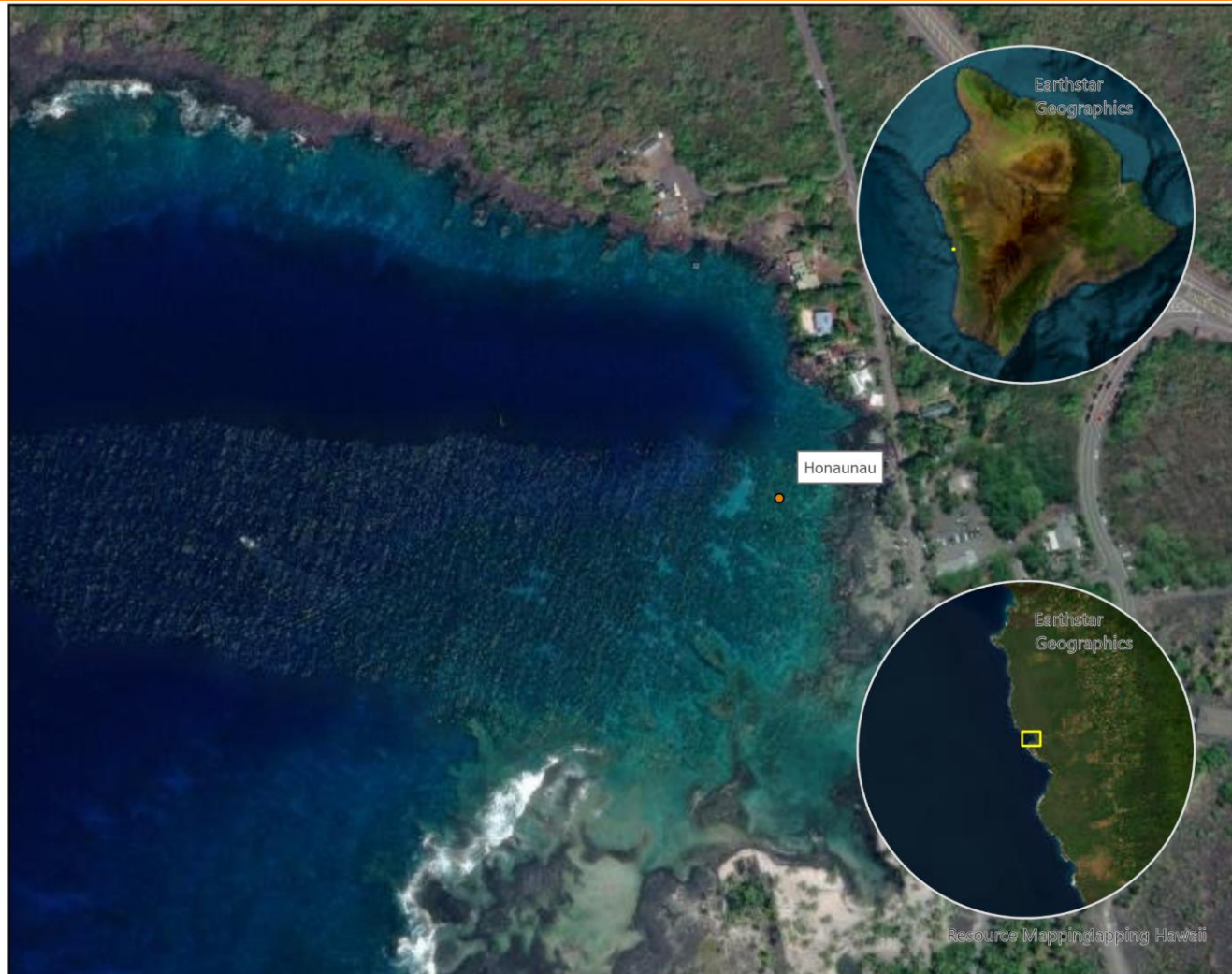
Substrate



- Live Coral Cover
- Other Cover
- Available Substrate
- Sand
- Disturbance Indicators
- Pollution Indicators

Reef Check substrate surveys are conducted using a Point Sampling method every 50 centimeters along 4 x 20 meter transects.



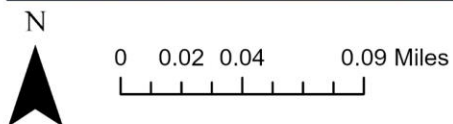


Legend

Hard Coral (HC)

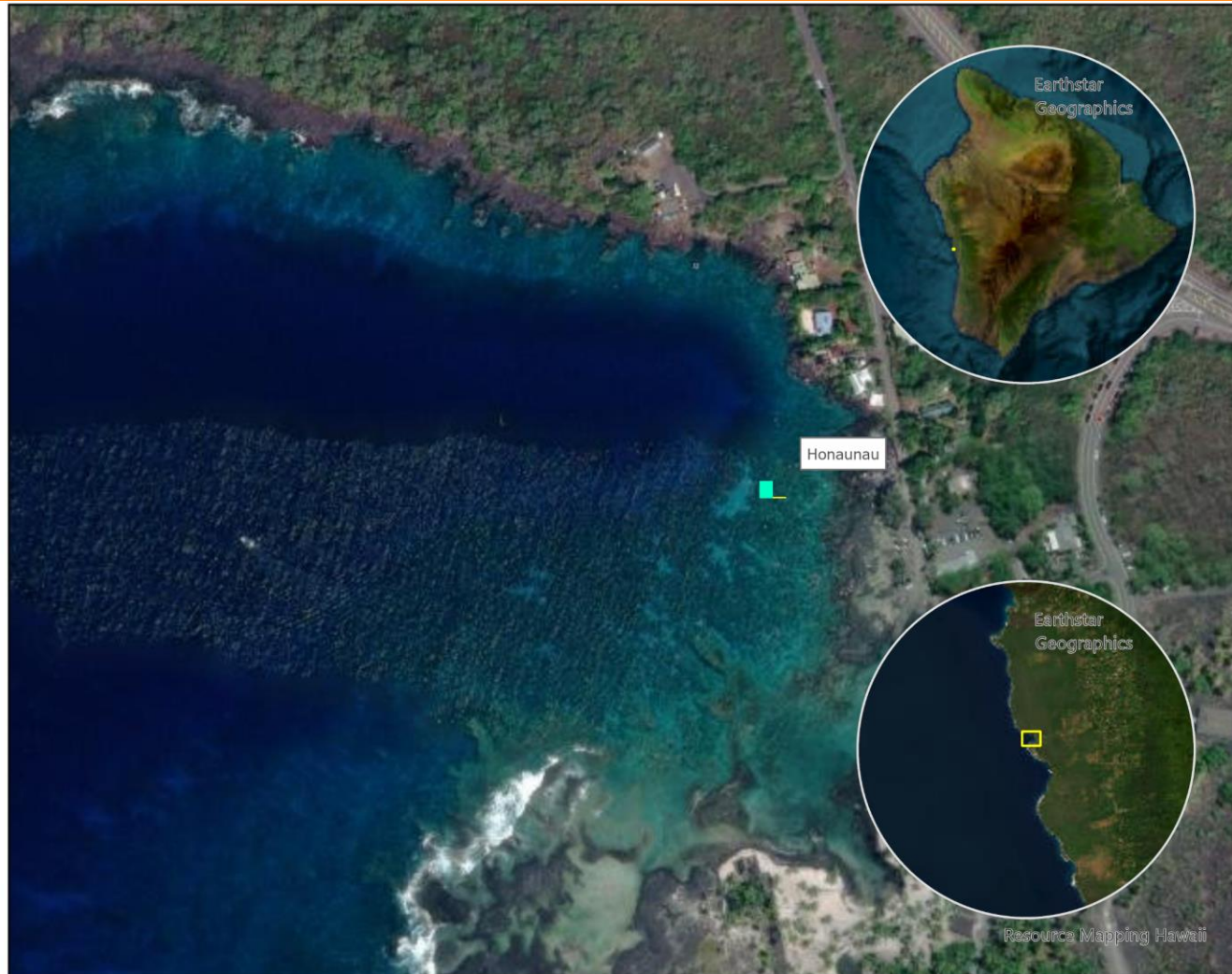
- Excellent 75.01% - 100.00%
- Good 50.01% - 75.00%
- Fair 25.01% - 50.00%
- Poor $\leq 25\%$

Reef Check substrate surveys are conducted using a Point Sampling method every 50 centimeters along 4 x 20 meter transects.



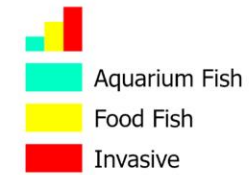
Hōnaunau

Year: 2024

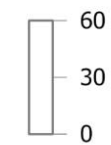


Legend

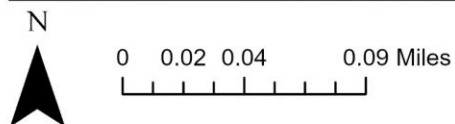
Fish

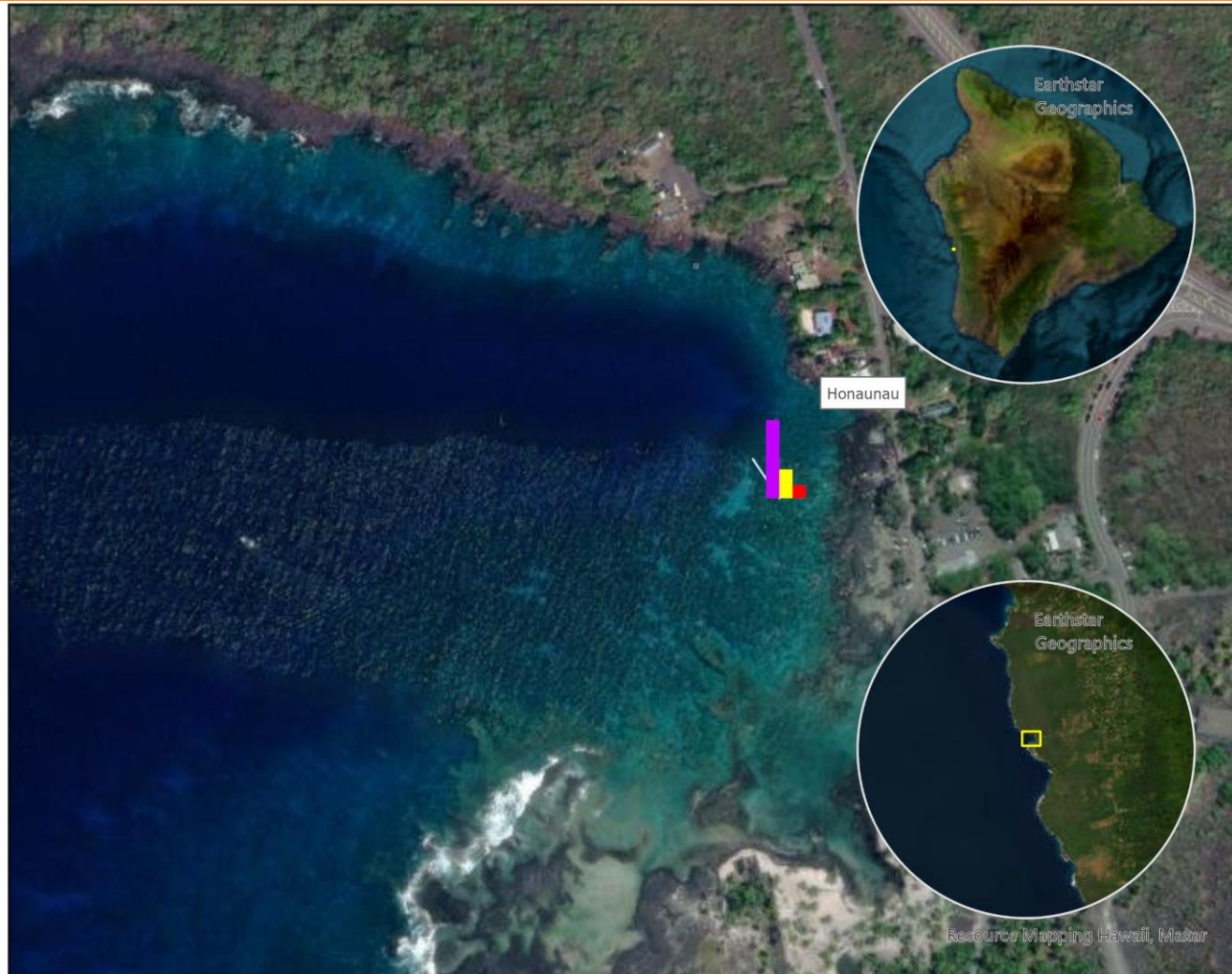


Selected fields

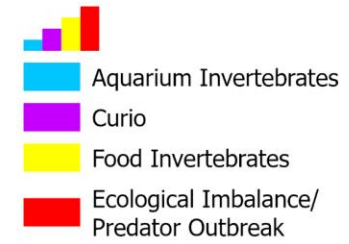


Reef Check fish surveys are conducted along 4 x 20 meter long x 5 meter wide x 5 meter high corridors.

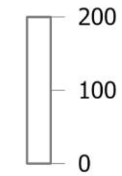




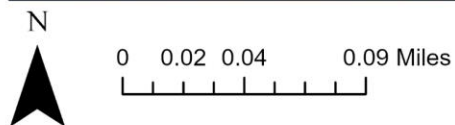
Legend

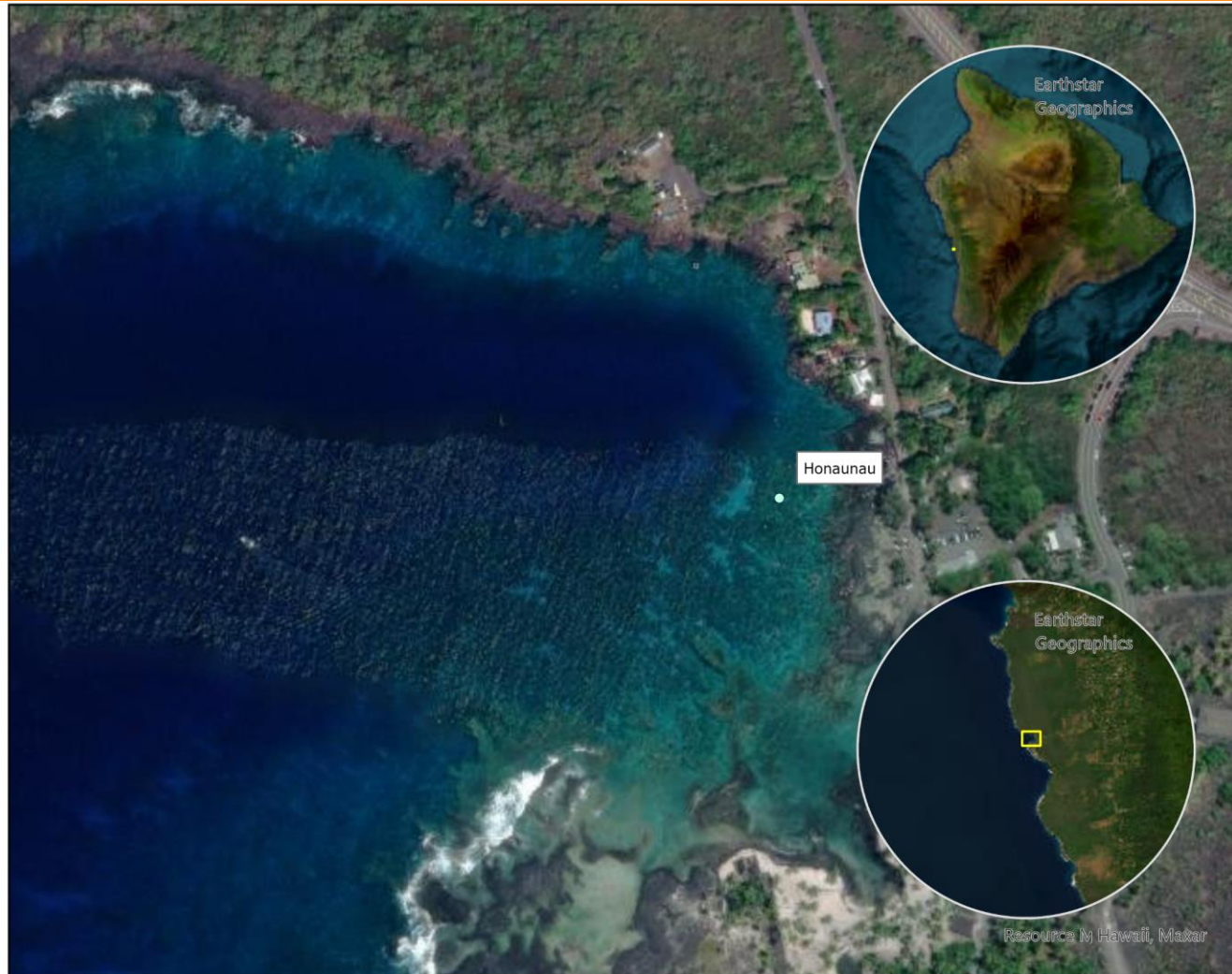


Selected fields



Reef Check invertebrate surveys are conducted along 4 x 20 meter long x 5 meter wide belts.



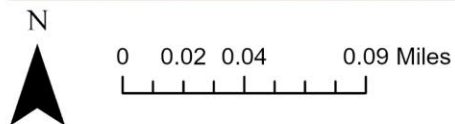


Legend

Bleaching (% of population)*

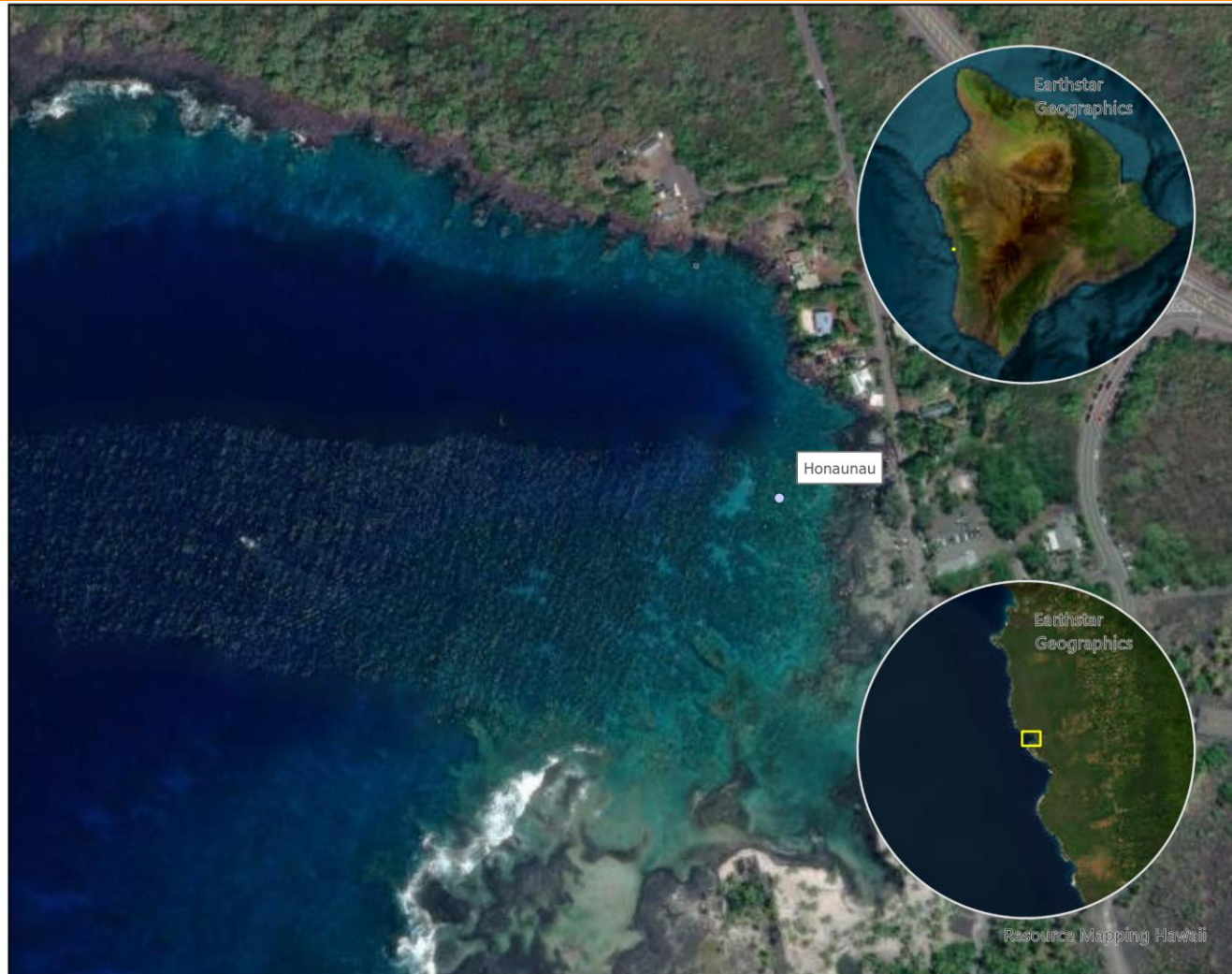
- 75.01 - 100.00%
- 50.00 - 75.00%
- 25.01 - 50.00%
- 0.01 - 25.00%
- No Bleaching Observed

Reef Check impact surveys are conducted along 4 x 20 meter long x 5 meter wide belts.



Hōnaunau

Year: 2024

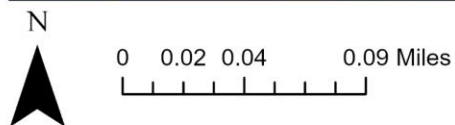


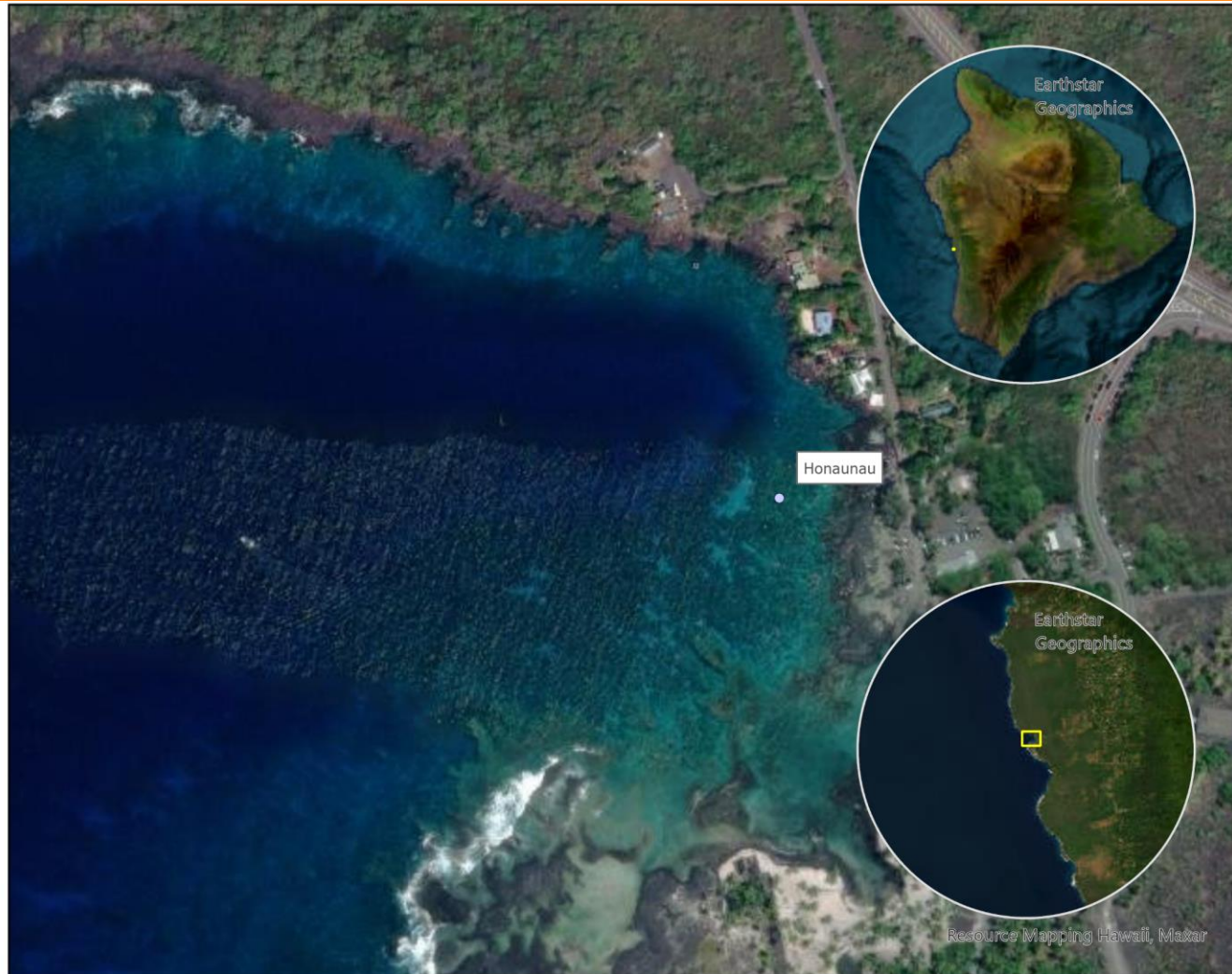
Legend

Black Band

- No Black Band Disease Observed

Reef Check impact surveys are conducted along 4 x 20 meter long x 5 meter wide belts.





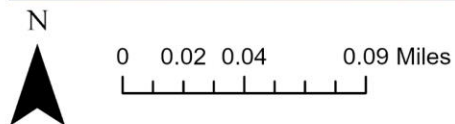
Legend

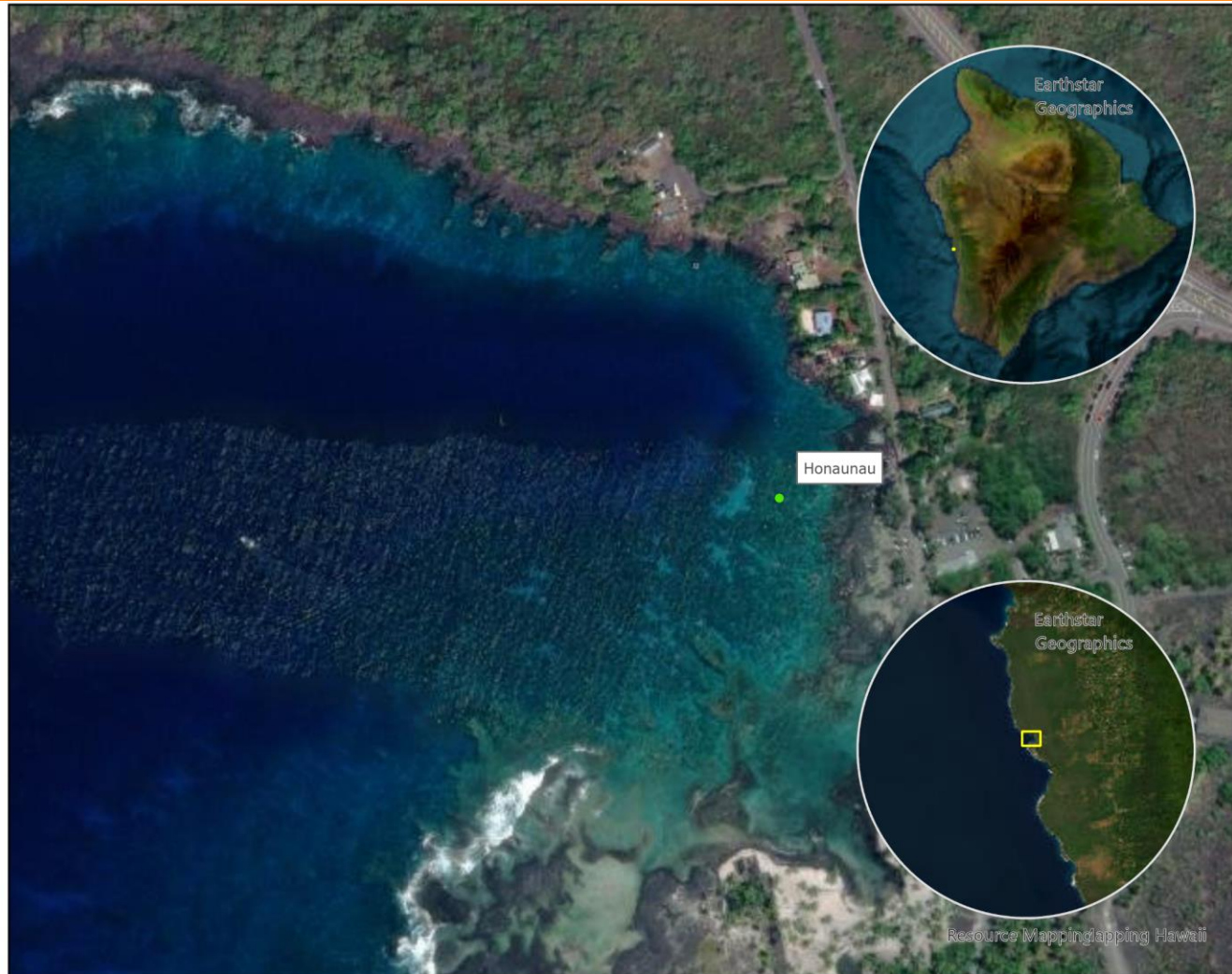
White Band
Disease

White Band

- No White Band Disease Observed

Reef Check impact surveys are conducted along 4 x 20 meter long x 5 meter wide belts.





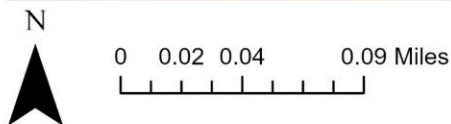
Legend

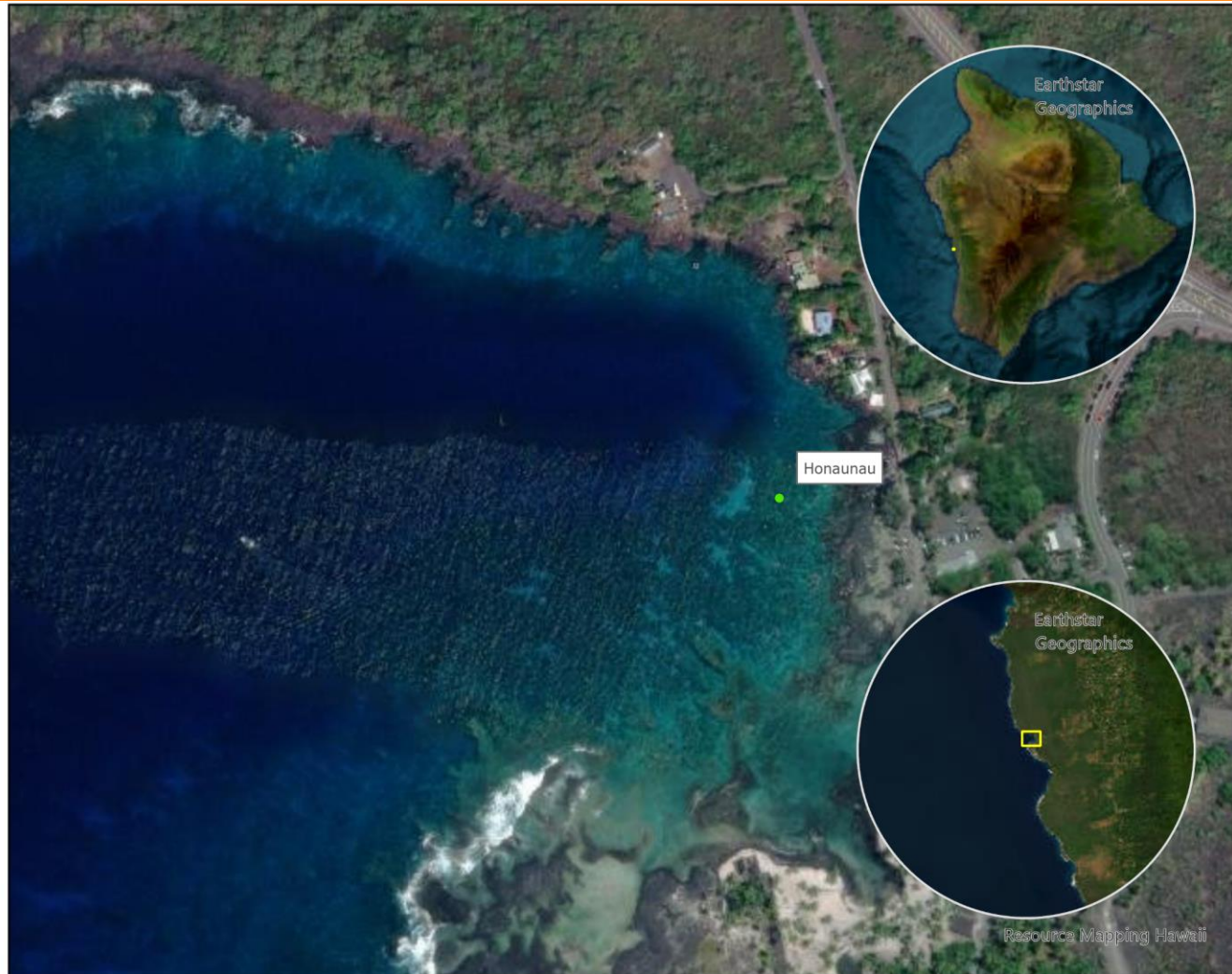
Coral Damage:
Boat/Anchor

Coral damage: boat/
anchor

- High 2.01 - 3.00
- Medium 1.01 - 2.00
- Low 0.01 - 1.00
- No Damage Observed

Reef Check impact surveys are conducted along 4 x 20 meter long x 5 meter wide belts.





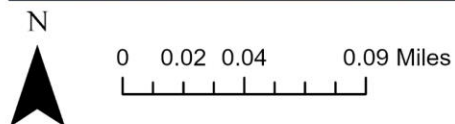
Legend

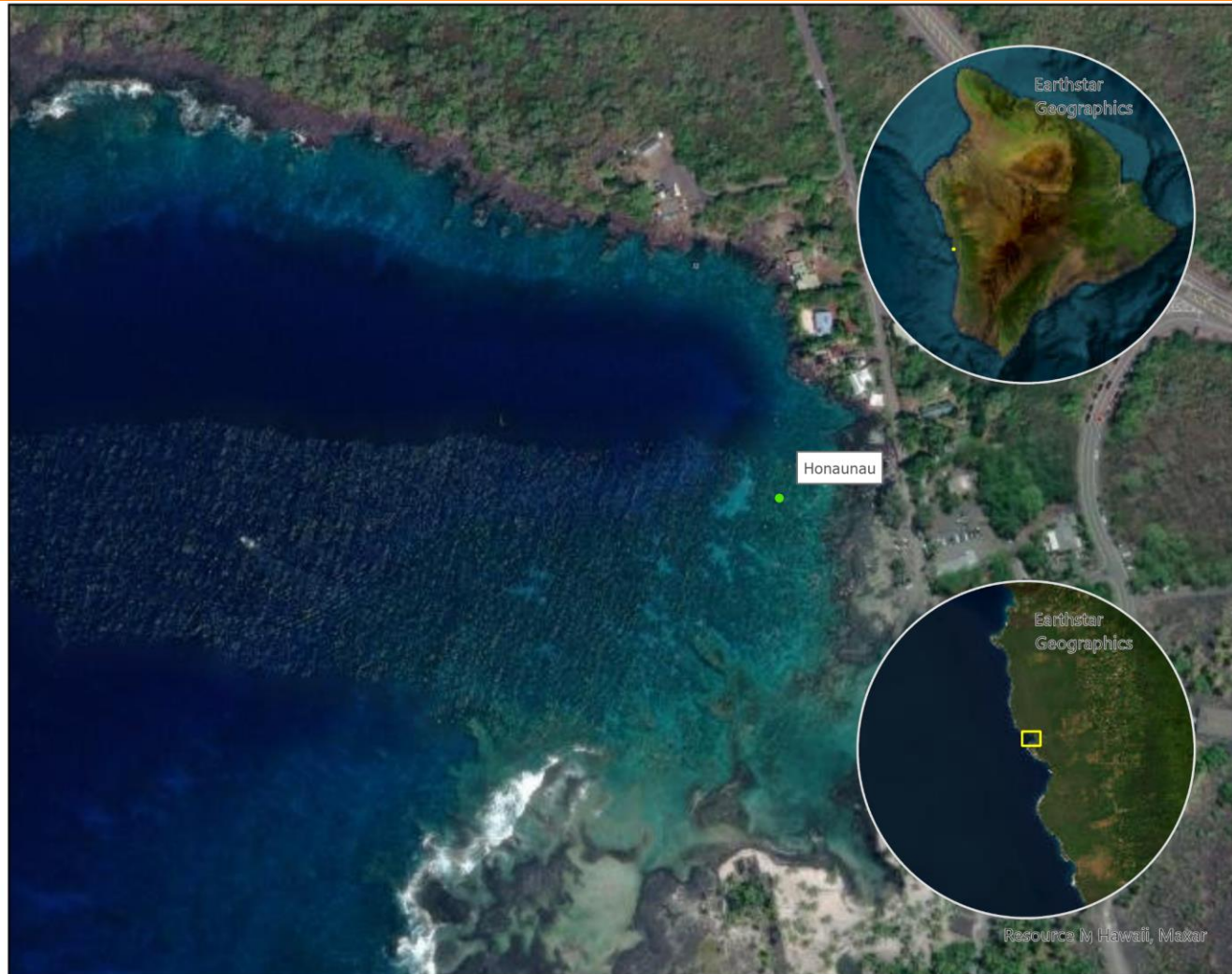
Coral Damage:
Dynamite

Coral damage:
dynamite

● No Damage Observed

Reef Check impact surveys are conducted along 4 x 20 meter long x 5 meter wide belts.





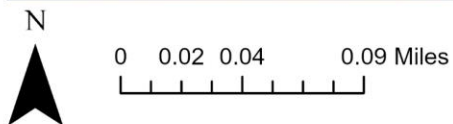
Legend

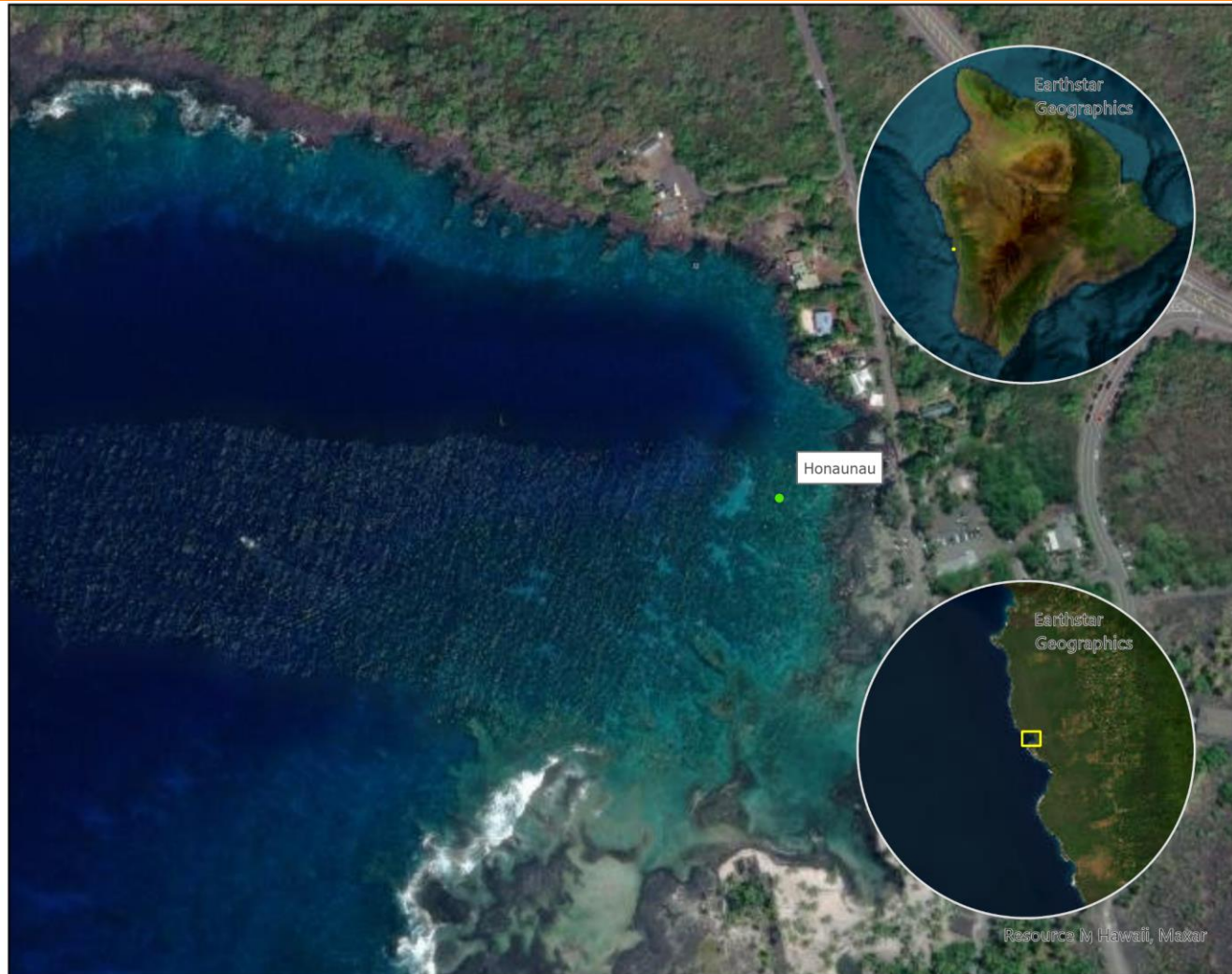
Coral Damage:
Other

Coral damage: other

- High 2.01 - 3.00
- Medium 1.01 - 2.00
- Low 0.01 - 1.00
- No Damage Observed

Reef Check impact surveys are conducted along 4 x 20 meter long x 5 meter wide belts.





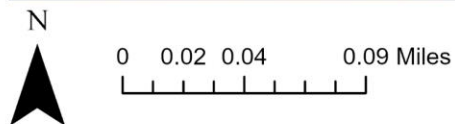
Legend

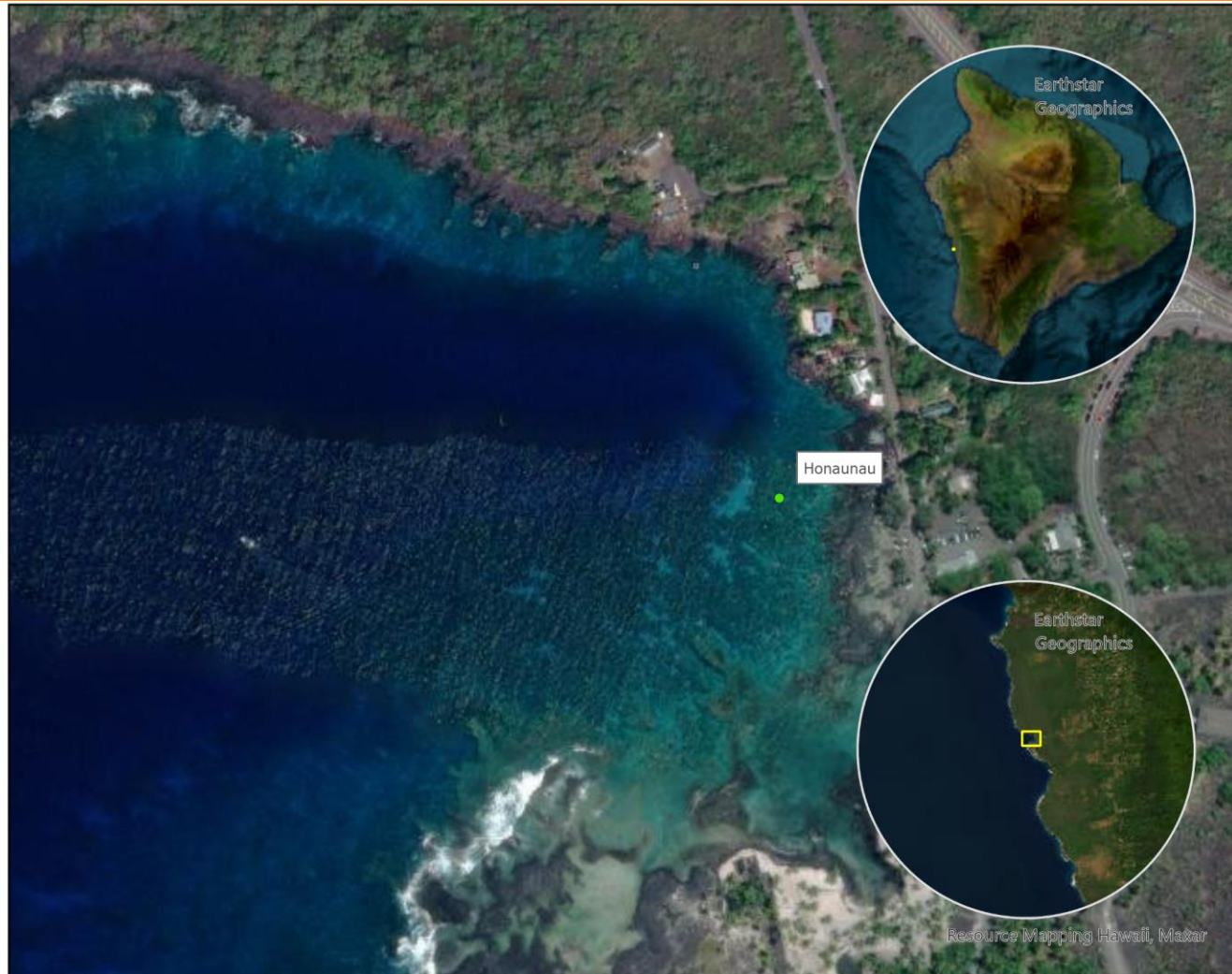
Trash: Fish Nets

Trash: fish nets

● No Trash Observed

Reef Check impact surveys are conducted along 4 x 20 meter long x 5 meter wide belts.





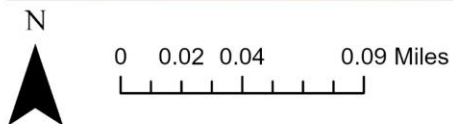
Legend

Trash: General

Trash: general

- High 2.01 - 3.00
- Medium 1.01 - 2.00
- Low 0.01 - 1.00
- No Trash Observed

Reef Check impact surveys are conducted along 4 x 20 meter long x 5 meter wide belts.



Island: Hawai'i



Region: West Hawai'i
Sub Region: Hōnaunau

Sites:

- Hōnaunau

Survey Date: 12/13/2024

Latitude: 19.42361

Longitude: -155.9119

Depth (m): 8

Substrate	
Live Coral Cover	32.50%
Hard Coral	32.50%
Soft Coral	0.00%
Other	0.00%
Other	0.00%
Available Substrate	44.37%
Rock	44.37%
Sand	6.25%
Sand	6.25%
Disturbance Indicators	16.88%
Recently Killed Coral	2.50%
Rubble	12.50%
Silt	1.88%
Pollution Indicators	0.00%
Nutrient Indicator Algae	0.00%
Sponge	0.00%

Fish per 500m ³	
Aquarium Fish	9.75
Butterfly Fish	4.25
Orangespine Unicornfish	1.00
Yellow Tang	4.50
Food Fish	0.75
Jacks	0.00
Yellowfin Goatfish	0.00
Parrotfish	0.00
Snapper	0.25
Moray Eel	0.50
Invasive	0.00
Blueline Snapper	0.00
Peacock Grouper	0.00

Invertebrates per 100m ²	
Aquarium Invertebrates	0.00
Banded Coral Shrimp	0.00
Curio	113.75
Cowries	0.00
Pencil Urchin	113.75
Triton	0.00
Food Invertebrates	42.00
Collector Urchin	42.00
Lobster	0.00
Ecological Imbalance / Predator Outbreak	19.00
Long Spined Black Sea Urchin	19.00
Crown of Thorns Sea Star	0.00

Impacts	
Coral Bleaching % Population	0.00%
Coral Bleaching % Colony	0.00%
Black Band Disease % Population	0.00%
White Band Disease % Population	0.00%
Coral Damage: Boat / Anchor	0.00
Coral Damage: Dyanmite	0.00
Coral Damage: Other	0.00
Trash: Fish Nets	0.50
Trash: General	0.00

Megafauna / Rare Species per 500m ³	
Sharks	0.00
Turtles	0.00
Manta Rays	0.00
Other Megafauna	0.00

4. Team

Reef Check Hawai'i Team



EcoDiver Trainer



Adam Florea

Program Coordinator



Brad Giles

EcoDiver Trainer



Rachel Yoder

5. Acknowledgements

Acknowledgements



Thank you to our 2024 Sponsor:



Inspired Brewing®

Thank you to Julian Hyde, CEO of Reef Check Malaysia for providing your support and guidance to the reigniting of our program here in Hawai'i. Also, a special thank you to our volunteer dive team who took time to survey with us this year. We are grateful for your efforts in supporting coral reef resiliency here in Hawai'i. Together we make a difference!

2024 Reef Check Hawai'i Volunteer Dive Team:

- Kathryn H.
- James K.
- Carol W.
- Dustin W.