



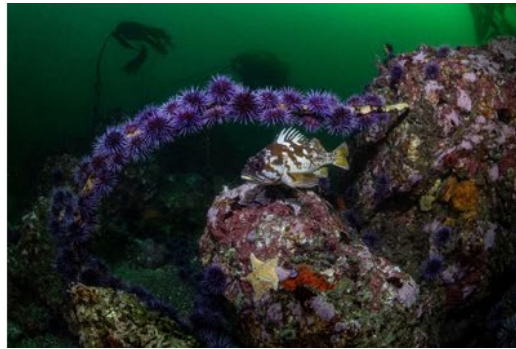
# Reef Check Foundation

## Annual Report 2022

### Our Mission: Empowering People to Save Reefs and Oceans

2022 was a great year for Reef Check and we owe that to our global community of volunteers, donors, and partners. Reef Check has grown in every aspect: monitoring coral reefs around the world and kelp forests along the West Coast, restoration and education all have increased and hit new heights.

## 2022 Successes



### Kelp Forest Program

- [Reef Check Expands into Washington State](#)
- [Invasive Seaweed Found in California Marine Protected Area](#)
- [Banner Year for Kelp Forest Monitoring](#)

### Restoration Program

- [Annie Bauer-Civiello Joins Reef Check as Restoration Program Director](#)
- [Restoration of Northern California Bull Kelp Forests Report](#)
- [Volunteer Divers Successfully Restore Kelp at Tankers Reef](#)
- [New Kelp Restoration Site in Big Sur](#)

### Coral Reef Program

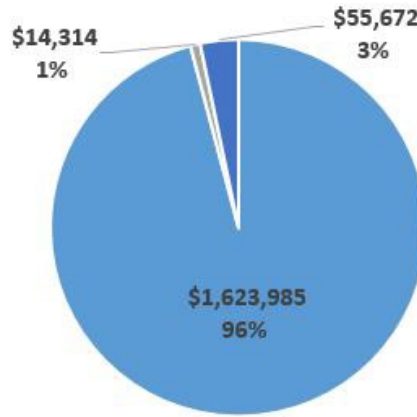
- [New Research from Florida Tech Uses Reef Check Data to Identify Coral Reef 'Bright Spots'](#)
- [New Reef Check Program Launches in Ecuador](#)
- [Reef Check Malaysia Celebrates 15 Years](#)
- [Reef Check's Tropical Program Reaches Milestone](#)

### Education Program

- [Reef Check Provides Training Scholarships to Seven Recipients](#)

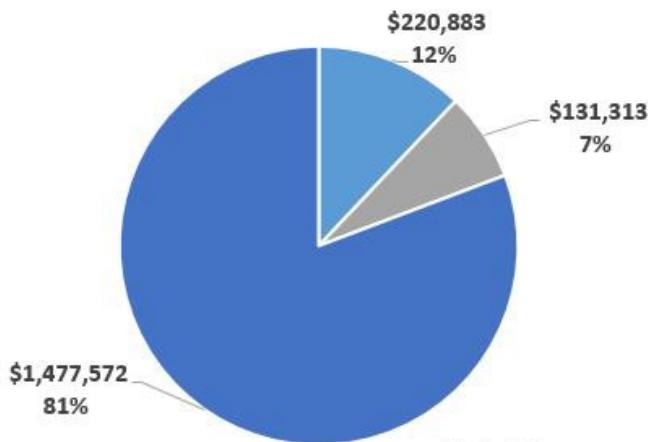
# Funding

## Income



**Total Income: \$1,693,971**

■ Contributed Support ■ Special Events ■ Earned Revenues



**Total Expenses: \$1,829,768**

■ Administrative Expenses ■ Fundraising Expenses ■ Program Expenses

## Expenses

**End of year net assets: \$263,426**

## Board of Directors

### Co-Chairs

Perry Roshan-Zamir  
Linden Wolbert

### Secretary

Julie Rubash

### Treasurer

Robert Kugel

Evan Birenbaum  
Helen Brierley  
Matthew Bullock  
Sue Chen  
Blake Cornwell  
Scott Gietler  
Chris Glaeser  
Cynthia Issel  
Sari Kern  
Russ Lesser  
Art Levitt  
Mark D. Martin  
Robert McClatchy  
William McIlvene

**Many thanks to our donors, volunteers, training facilities and partners around the world!**

You are the reason that the work here at Reef Check is possible— we truly could not exist without you! We may come from different walks of life and reside in different corners of the world, but we share one very important thing in common: a commitment to doing all we can to ensure the health and sustainability of our reefs for all that depend on them. We are so grateful for the trust you place in us to achieve this mission, and for the support that makes it possible. From the bottom of our hearts, we thank you for your continued partnership.

We look forward to reaching new heights together in the year to come!

